



**Water Monitoring Result at C7 - Windsor House  
Mid-Flood Tide**

Date	Time	Weather Condition	Sampling Depth m	Water Temperature °C		pH		Salinity ppt		DO Saturation %		DO mg/L		Turbidity NTU		Suspended Solids mg/L								
				Value	Average	Value	Average	Value	Average	Value	Average	Value	Average	Value	Average	Value	Average							
27/1/18	13:20	Cloudy	Middle	-	17.60	17.60	17.55	8.34	8.34	8.34	31.56	31.56	31.57	95.2	96.1	95.6	7.45	7.60	7.54	2.48	2.49	2.45	4	4.00
	13:22		Middle	-	17.50	17.50	17.55	8.34	8.34	8.34	31.57	31.57	31.57	95.7	95.3	95.6	7.57	7.54	7.54	2.42	2.39	2.45	4	
29/1/18	16:25	Cloudy	Middle	-	16.40	16.40	16.25	8.30	8.30	8.31	31.52	31.52	31.52	88.7	88.0	88.2	7.19	7.14	7.16	1.34	1.33	1.33	5	4.50
	16:27		Middle	-	16.10	16.10	16.25	8.32	8.32	8.31	31.52	31.52	31.52	88.0	88.0	88.2	7.15	7.15	7.16	1.33	1.33	1.33	4	
1/2/18	18:43	Cloudy	Middle	-	15.30	15.30	15.30	8.22	8.22	8.22	32.10	32.10	32.10	80.3	80.0	80.3	7.03	7.01	7.03	1.07	1.02	1.05	6	7.00
	18:44		Middle	-	15.30	15.30	15.30	8.22	8.22	8.22	32.10	32.10	32.10	80.3	80.6	80.3	7.03	7.06	7.03	1.01	1.10	1.05	8	
3/2/18	10:10	Fine	Middle	-	14.90	14.90	14.90	8.09	8.09	8.10	32.59	32.59	32.60	77.8	75.3	76.6	6.44	6.23	6.34	6.55	6.35	6.47	4	3.50
	10:12		Middle	-	14.90	14.90	14.90	8.11	8.11	8.10	32.60	32.60	32.60	76.2	77.0	76.6	6.30	6.37	6.34	6.49	6.50	6.47	3	
5/2/18	10:20	Fine	Middle	-	14.60	14.60	14.50	8.23	8.23	8.24	31.73	31.73	31.74	85.1	85.3	85.4	7.13	7.16	7.17	2.04	2.05	2.05	4	4.00
	10:22		Middle	-	14.40	14.40	14.50	8.24	8.24	8.24	31.74	31.74	31.74	85.7	85.6	85.4	7.19	7.19	7.17	2.05	2.04	2.05	4	
7/2/18	12:10	Fine	Middle	-	15.40	15.40	15.40	8.26	8.26	8.26	31.73	31.73	31.73	89.1	88.5	88.4	7.34	7.28	7.28	1.84	1.84	1.84	2	2.50
	12:12		Middle	-	15.40	15.40	15.40	8.26	8.26	8.26	31.73	31.73	31.73	88.4	87.6	88.4	7.28	7.21	7.28	1.84	1.85	1.84	3	
9/2/18	11:59	Fine	Middle	-	17.20	17.20	17.25	8.03	8.03	8.04	32.69	32.69	33.95	75.1	75.6	75.6	5.94	5.98	5.98	6.71	6.72	6.69	6	6.00
	12:00		Middle	-	17.30	17.30	17.25	8.05	8.05	8.04	37.70	32.70	33.95	75.6	76.0	75.6	5.98	6.01	5.98	6.67	6.66	6.69	6	
12/2/18	15:50	Fine	Middle	-	16.90	16.90	17.00	8.35	8.35	8.36	31.85	31.85	31.85	96.1	96.0	95.7	7.66	7.65	7.63	5.83	5.86	5.80	9	9.00
	15:52		Middle	-	17.10	17.10	17.00	8.36	8.36	8.36	31.84	31.84	31.85	95.7	95.0	95.7	7.63	7.57	7.63	5.76	5.73	5.80	9	
14/2/18	16:20	Fine	Middle	-	16.20	16.20	16.25	8.31	8.31	8.32	31.77	31.77	31.77	89.4	89.9	89.5	7.24	7.28	7.25	2.51	2.50	2.50	3	3.00
	16:22		Middle	-	16.30	16.30	16.25	8.32	8.32	8.32	31.77	31.77	31.77	89.3	89.4	89.5	7.23	7.24	7.25	2.50	2.50	2.50	3	
20/2/18	10:25	Fine	Middle	-	17.80	17.80	17.90	8.14	8.14	8.14	31.58	31.58	31.58	83.9	84.2	84.1	6.59	6.61	6.61	1.64	1.64	1.64	3	3.00
	10:27		Middle	-	18.00	18.00	17.90	8.13	8.13	8.14	31.57	31.57	31.58	84.2	84.2	84.1	6.61	6.61	6.61	1.64	1.62	1.64	3	
22/2/18	13:50	Cloudy	Middle	-	17.00	17.00	17.05	8.17	8.17	8.17	31.67	31.67	31.67	87.1	87.3	87.4	6.95	6.96	6.97	27.73	27.73	27.73	33	34.00
	13:52		Middle	-	17.10	17.10	17.05	8.17	8.17	8.17	31.67	31.67	31.67	87.5	87.7	87.4	6.98	7.00	6.97	27.73	27.73	27.73	35	
24/2/18	9:15	Cloudy	Middle	-	17.20	17.20	17.25	8.12	8.12	8.13	31.62	31.62	31.62	81.3	81.3	81.1	6.46	6.46	6.44	2.34	2.32	2.32	2	3.00
	9:17		Middle	-	17.30	17.30	17.25	8.13	8.13	8.13	31.62	31.62	31.62	81.0	80.8	81.1	6.43	6.41	6.44	2.31	2.31	2.32	4	
26/2/18	14:45	Cloudy	Middle	-	17.90	17.90	17.95	8.08	8.08	8.07	31.59	31.59	31.59	77.9	77.8	77.8	6.11	6.10	6.10	2.35	2.35	2.35	4	4.00
	14:47		Middle	-	18.00	18.00	17.95	8.06	8.06	8.07	31.59	31.59	31.59	77.7	77.6	77.8	6.10	6.09	6.10	2.34	2.35	2.35	4	

Remarks:  
Single underline denotes exceedance over Action Level.  
Double underline denotes exceedance over Limit Level.



**Water Monitoring Result at C1 - HKCEC Extension  
Mid-Flood Tide**

Date	Time	Weather Condition	Sampling Depth		Water Temperature			pH			Salinity		DO Saturation		DO		Turbidity		Suspended Solids					
					°C			-			ppt		%		mg/L		NTU		mg/L					
			m	Value	Average	Value	Average	Value	Average	Value	Average	Value	Average	Value	Average	Value	Average	Value	Average	Value	Average			
27/1/18	13:05	Cloudy	Middle	2.5	17.00	17.00	17.00	8.37	8.37	8.37	31.63	31.63	31.64	93.6	94.1	94.0	7.48	7.52	7.51	1.78	1.82	1.79	5	5.50
	13:07		Middle	2.5	17.00	17.00		8.37	8.37		31.64	31.64		94.2	94.1		7.52	7.52		1.79	1.77		6	
29/1/18	15:15	Cloudy	Middle	3.0	16.20	16.20	16.15	8.39	8.39	8.39	31.75	31.75	31.75	89.0	88.9	89.0	7.23	7.23	7.23	2.82	2.86	2.87	6	7.00
	15:17		Middle	3.0	16.10	16.10		8.39	8.39		31.75	31.75		89.0	89.0		7.23	7.23		2.90	2.91		8	
1/2/18	18:02	Cloudy	Middle	2.5	15.20	15.20	15.20	8.23	8.23	8.23	32.27	32.27	32.27	82.0	83.3	82.6	6.78	6.89	6.83	1.21	1.03	1.13	5	5.00
	18:03		Middle	2.5	15.20	15.20		8.23	8.23		32.27	32.27		82.6	82.3		6.83	6.80		1.19	1.09		5	
3/2/18	9:36	Fine	Middle	3.5	14.90	14.90	14.90	8.06	8.06	8.07	32.85	32.85	32.86	82.2	81.7	81.2	6.28	6.75	6.58	4.07	4.01	4.02	4	4.00
	9:38		Middle	3.5	14.90	14.90		8.07	8.07		32.86	32.86		80.4	80.3		6.64	6.63		4.00	4.00		4	
5/2/18	12:45	Fine	Middle	3.0	14.60	14.60	14.70	8.34	8.34	8.34	32.04	32.04	32.04	86.6	87.3	87.0	7.20	7.26	7.24	2.82	2.81	2.84	5	4.50
	12:47		Middle	3.0	14.80	14.80		8.34	8.34		32.04	32.04		87.0	87.0		7.24	7.24		2.82	2.91		4	
7/2/18	11:15	Fine	Middle	3.0	14.60	14.60	14.55	8.32	8.32	8.32	31.95	31.95	31.95	86.7	86.8	86.8	7.24	7.25	7.25	2.62	2.63	2.62	5	5.50
	11:17		Middle	3.0	14.50	14.50		8.32	8.32		31.95	31.95		87.0	86.8		7.27	7.25		2.62	2.61		6	
9/2/18	15:46	Fine	Middle	3.5	15.20	15.20	15.20	8.25	8.25	8.25	33.16	33.16	33.16	88.1	87.4	86.7	7.22	7.16	7.10	1.92	1.81	1.91	4	3.50
	15:48		Middle	3.5	15.20	15.20		8.25	8.25		33.16	33.16		86.1	85.2		7.05	6.98		1.92	1.99		3	
12/2/18	14:40	Fine	Middle	3.0	16.20	16.20	16.25	8.37	8.37	8.37	32.14	32.14	32.14	95.1	95.5	95.3	7.68	7.71	7.70	2.14	2.11	2.08	4	4.00
	14:42		Middle	3.0	16.30	16.30		8.37	8.37		32.14	32.14		95.6	95.1		7.72	7.68		2.06	2.00		4	
14/2/18	15:35	Fine	Middle	2.5	15.90	15.90	15.90	8.31	8.31	8.31	32.10	32.10	32.10	92.7	97.3	95.2	7.54	7.59	7.56	2.34	2.35	2.35	4	3.50
	15:37		Middle	2.5	15.90	15.90		8.31	8.31		32.10	32.10		93.0	97.7		7.57	7.54		2.35	2.34		3	
20/2/18	9:15	Fine	Middle	3.0	17.60	17.60	17.65	8.19	8.19	8.19	31.64	31.64	31.64	83.5	83.8	83.9	6.58	6.60	6.61	2.44	2.40	2.38	4	4.00
	9:17		Middle	3.0	17.70	17.70		8.19	8.19		31.63	31.63		84.0	84.3		6.61	6.64		2.36	2.30		4	
22/2/18	10:35	Cloudy	Middle	2.5	16.60	16.60	16.60	8.19	8.19	8.19	31.74	31.74	31.74	80.5	80.8	80.7	6.48	6.50	6.50	3.32	3.30	3.29	6	5.50
	10:37		Middle	2.5	16.60	16.60		8.19	8.19		31.74	31.74		80.8	80.7		6.51	6.50		3.28	3.27		5	
24/2/18	12:40	Cloudy	Middle	3.0	16.80	16.80	16.85	8.15	8.15	8.15	31.75	31.75	31.55	85.1	85.5	85.4	6.80	6.84	6.83	2.50	2.53	2.54	3	4.00
	12:42		Middle	3.0	16.90	16.90		8.15	8.15		31.35	31.35		85.4	85.6		6.83	6.85		2.58	2.56		5	
26/2/18	14:15	Cloudy	Middle	3.0	17.10	17.10	17.15	8.15	8.15	8.15	31.68	31.68	31.69	78.8	79.4	79.1	6.38	6.32	6.33	1.93	1.99	1.98	3	3.00
	14:17		Middle	3.0	17.20	17.20		8.15	8.15		31.69	31.69		79.4	78.9		6.32	6.28		2.01	2.00		3	

Remarks:  
Single underline denotes exceedance over Action Level.  
Double underline denotes exceedance over Limit Level.



**Water Monitoring Result at P1 - HKCEC Phase I  
Mid-Flood Tide**

Date	Time	Weather Condition	Sampling Depth		Water Temperature			pH			Salinity		DO Saturation		DO		Turbidity			Suspended Solids				
			m		°C		-		ppt		%		mg/L		NTU		mg/L							
					Value	Average	Value	Average	Value	Average	Value	Average	Value	Average	Value	Average	Value	Average						
27/1/18	12:45	Cloudy	Middle	2.5	17.10	17.10	17.15	8.24	8.24	8.28	31.91	31.91	31.91	95.5	95.5	95.0	7.59	7.59	7.55	1.23	1.18	1.15	5	4.50
	12:47		Middle	2.5	17.20	17.20		8.31	8.31		31.91	31.91		94.0	95.1		7.47	7.56		1.12	1.08		4	
29/1/18	14:50	Cloudy	Middle	3.0	15.20	15.20	15.15	8.34	8.34	8.35	31.86	31.86	31.86	91.4	91.4	91.6	7.55	7.55	7.57	2.10	2.09	2.09	9	8.00
	14:52		Middle	3.0	15.10	15.10		8.36	8.36		31.86	31.86		91.7	91.7		7.58	7.58		2.09	2.08		7	
1/2/18	17:40	Cloudy	Middle	2.5	14.50	14.50	14.50	8.24	8.24	8.24	32.33	32.33	32.33	84.0	85.5	85.1	7.02	7.13	7.11	1.11	1.16	1.15	3	3.50
	17:41		Middle	2.5	14.50	14.50		8.24	8.24		32.33	32.33		85.3	85.5		7.13	7.14		1.24	1.07		4	
3/2/18	9:20	Fine	Middle	3.5	14.30	14.30	14.20	7.81	7.81	7.86	32.72	32.74	32.77	88.3	86.4	86.1	7.41	7.25	7.23	3.31	3.36	3.64	4	3.50
	9:22		Middle	3.5	14.10	14.10		7.90	7.90		32.80	32.80		85.5	84.3		7.17	7.08		3.97	3.90		3	
5/2/18	12:25	Fine	Middle	3.0	14.80	14.80	14.70	8.28	8.28	8.29	30.61	30.61	30.61	86.7	86.2	87.3	7.34	7.30	7.38	2.16	2.13	2.13	4	4.00
	12:27		Middle	3.0	14.60	14.60		8.30	8.30		30.61	30.61		88.0	88.4		7.42	7.44		2.11	2.10		4	
7/2/18	10:55	Fine	Middle	3.0	14.50	14.50	14.55	8.31	8.31	8.31	31.99	31.99	31.99	86.0	86.6	86.5	7.19	7.24	7.23	2.08	2.06	2.02	4	5.00
	10:57		Middle	3.0	14.60	14.60		8.31	8.31		31.99	31.99		86.7	86.8		7.24	7.25		1.96	1.98		6	
9/2/18	15:30	Fine	Middle	3.5	15.80	15.80	15.90	8.11	8.11	8.14	33.12	33.12	33.11	95.4	95.0	95.6	7.70	7.68	7.73	2.48	2.50	2.50	5	4.50
	15:32		Middle	3.5	16.00	16.00		8.16	8.16		33.09	33.09		96.0	95.9		7.79	7.74		2.50	2.50		4	
12/2/18	14:20	Fine	Middle	3.0	17.10	17.10	17.20	8.31	8.31	8.32	32.13	32.13	32.13	98.4	98.5	98.0	7.81	7.81	7.78	2.16	2.20	2.20	7	6.00
	14:22		Middle	3.0	17.30	17.30		8.33	8.33		32.12	32.12		97.9	97.3		7.76	7.72		2.21	2.22		5	
14/2/18	15:15	Fine	Middle	2.5	16.80	16.80	16.90	8.21	8.21	8.24	32.17	32.17	32.17	95.8	96.4	96.3	7.64	7.68	7.68	3.23	3.20	3.20	2	2.50
	15:17		Middle	2.5	17.00	17.00		8.26	8.26		32.17	32.17		96.7	96.1		7.71	7.70		3.16	3.19		3	
20/2/18	8:55	Fine	Middle	3.0	18.70	18.70	18.85	8.02	8.02	8.06	31.76	31.76	31.76	86.2	86.2	86.3	6.62	6.62	6.63	2.50	2.40	2.41	3	3.50
	8:57		Middle	3.0	19.00	19.00		8.10	8.10		31.75	31.75		86.6	86.2		6.66	6.62		2.38	2.36		4	
22/2/18	10:15	Cloudy	Middle	2.5	16.50	16.50	16.50	8.18	8.18	8.18	31.74	31.74	31.74	85.4	85.8	85.5	6.88	6.91	6.89	2.52	2.49	2.46	6	5.50
	10:17		Middle	2.5	16.50	16.50		8.18	8.18		31.74	31.74		85.7	85.1		6.91	6.85		2.42	2.39		5	
24/2/18	12:20	Cloudy	Middle	3.0	17.50	17.50	17.60	8.14	8.14	8.15	31.86	31.86	31.86	84.2	84.6	84.4	6.63	6.66	6.65	1.64	1.69	1.60	5	5.00
	12:22		Middle	3.0	17.70	17.70		8.15	8.15		31.85	31.85		84.5	84.4		6.65	6.64		1.52	1.56		5	
26/2/18	13:55	Cloudy	Middle	3.0	17.30	17.30	17.35	8.15	8.15	8.16	31.80	31.80	31.80	85.2	85.4	85.5	6.75	6.76	6.77	1.42	1.44	1.41	4	4.50
	13:57		Middle	3.0	17.40	17.40		8.16	8.16		31.79	31.79		85.6	85.9		6.77	6.80		1.42	1.37		5	

Remarks:  
Single underline denotes exceedance over Action Level.  
Double underline denotes exceedance over Limit Level.





**Water Monitoring Result at P4 - SOC  
Mid-Flood Tide**

Date	Time	Weather Condition	Sampling Depth		Water Temperature			pH			Salinity		DO Saturation		DO		Turbidity		Suspended Solids					
					°C		-		ppt		%		mg/L		NTU		mg/L							
			m	Value	Average	Value	Average	Value	Average	Value	Average	Value	Average	Value	Average	Value	Average	Value	Average					
27/1/18	12:55	Cloudy	Middle	2.5	16.80	16.80	16.85	8.34	8.34	8.35	31.71	31.71	31.71	94.2	95.0	94.7	7.54	7.61	7.58	2.27	2.29	2.28	3	3.50
	12:57		Middle	2.5	16.90	16.90		8.36	8.36		31.70	31.70		94.7	95.0		7.58	7.60		2.29	2.27		4	
29/1/18	15:00	Cloudy	Middle	3.0	15.70	15.70	15.60	8.38	8.38	8.38	31.82	31.82	31.83	90.3	90.1	90.3	7.39	7.38	7.39	1.88	1.96	1.97	6	6.00
	15:02		Middle	3.0	15.50	15.50		8.38	8.38		31.83	31.83		90.4	90.2		7.41	7.39		1.99	2.06		6	
1/2/18	17:53	Cloudy	Middle	2.5	14.80	14.80	14.80	8.25	8.25	8.25	32.29	32.29	32.29	80.7	81.6	81.1	6.70	6.78	6.74	1.17	1.24	1.22	7	5.50
	17:54		Middle	2.5	14.80	14.80		8.25	8.25		32.29	32.29		80.6	81.5		6.70	6.77		1.32	1.15		4	
3/2/18	9:28	Fine	Middle	3.5	14.40	14.40	14.40	7.99	7.99	8.01	32.81	32.81	32.83	81.5	80.6	81.2	6.80	6.73	6.77	3.83	3.82	3.90	3	3.50
	9:30		Middle	3.5	14.40	14.40		8.02	8.02		32.84	32.84		81.0	81.8		6.76	6.77		3.97	3.98		4	
5/2/18	12:35	Fine	Middle	3.0	14.60	14.60	14.55	8.32	8.32	8.32	31.99	31.99	31.99	88.1	87.9	88.0	7.37	7.35	7.36	2.82	2.82	2.84	6	5.00
	12:37		Middle	3.0	14.50	14.50		8.32	8.32		31.99	31.99		88.2	87.9		7.38	7.35		2.83	2.87		4	
7/2/18	11:05	Fine	Middle	3.0	14.40	14.40	14.40	8.32	8.32	8.32	31.91	31.91	31.92	85.5	85.6	85.7	7.18	7.18	7.20	2.10	2.09	2.09	6	5.00
	11:07		Middle	3.0	14.40	14.40		8.32	8.32		31.92	31.92		85.9	85.7		7.22	7.21		2.09	2.09		4	
9/2/18	15:38	Fine	Middle	3.5	15.30	15.30	15.30	8.22	8.22	8.23	33.08	33.08	33.08	93.6	92.9	92.1	7.65	7.60	7.54	1.41	1.40	1.44	2	2.00
	15:40		Middle	3.5	15.30	15.30		8.23	8.23		33.08	33.08		91.5	90.5		7.49	7.40		1.40	1.55		2	
12/2/18	14:30	Fine	Middle	3.0	16.20	16.20	16.35	8.37	8.37	8.37	32.15	32.15	32.15	96.4	96.8	96.6	7.79	7.82	7.79	1.83	1.76	1.77	5	4.50
	14:32		Middle	3.0	16.50	16.50		8.37	8.37		32.14	32.14		96.7	96.6		7.77	7.76		1.75	1.73		4	
14/2/18	15:25	Fine	Middle	2.5	15.80	15.80	15.83	8.30	8.30	8.31	32.12	32.12	32.12	93.8	93.9	93.8	7.64	7.64	7.64	2.35	2.43	2.43	3	4.00
	15:27		Middle	2.5	15.90	15.80		8.31	8.31		32.12	32.12		93.5	94.0		7.61	7.65		2.46	2.48		5	
20/2/18	9:05	Fine	Middle	3.0	17.60	17.60	17.70	8.16	8.16	8.17	31.63	31.63	31.63	83.2	83.0	83.0	6.55	6.53	6.53	2.24	2.30	2.30	4	5.00
	9:07		Middle	3.0	17.80	17.80		8.17	8.17		31.62	31.62		83.0	82.7		6.53	6.51		2.32	2.33		6	
22/2/18	10:25	Cloudy	Middle	2.5	16.50	16.50	16.50	8.18	8.18	8.18	31.72	31.72	31.72	80.8	8.1	62.8	6.51	6.51	6.53	2.08	2.08	2.08	8	8.50
	10:27		Middle	2.5	16.50	16.50		8.18	8.18		31.72	31.72		81.0	81.3		6.53	6.55		2.08	2.06		9	
24/2/18	12:30	Cloudy	Middle	3.0	16.90	16.90	16.90	8.15	8.15	8.15	31.77	31.77	31.77	78.1	78.3	78.2	6.24	6.26	6.25	1.65	1.66	1.59	4	4.50
	12:32		Middle	3.0	16.90	16.90		8.15	8.15		31.76	31.76		78.4	77.8		6.26	6.22		1.53	1.53		5	
26/2/18	14:05	Cloudy	Middle	3.0	17.00	17.00	17.05	8.16	8.16	8.16	31.76	31.76	31.75	81.1	81.5	81.4	6.47	6.44	6.47	2.51	2.50	2.58	3	4.00
	14:07		Middle	3.0	17.10	17.10		8.16	8.16		31.74	31.74		81.4	81.4		6.48	6.49		2.78	2.51		5	

Remarks:  
Single underline denotes exceedance over Action Level.  
Double underline denotes exceedance over Limit Level.



**Water Monitoring Result at P5 - WCT / RT / IT  
Mid-Flood Tide**

Date	Time	Weather Condition	Sampling Depth m	Water Temperature °C			pH			Salinity ppt			DO Saturation %			DO mg/L		Turbidity NTU			Suspended Solids mg/L			
				Value	Average		Value	Average		Value	Average		Value	Average		Value	Average	Value	Average	Value	Average	Value	Average	
27/1/18	13:00	Cloudy	Middle	2.5	16.80	16.80	16.80	8.36	8.36	8.37	31.69	31.69	31.69	93.4	93.5	93.2	7.49	7.50	7.47	2.83	2.74	2.84	4	4.00
	13:02		Middle	2.5	16.80	16.80		8.37	8.37		31.69	31.69		93.0	92.7		7.45	7.43		2.88	2.91		4	
29/1/18	15:10	Cloudy	Middle	3.0	16.00	16.00	16.00	8.38	8.38	8.39	31.83	31.83	31.84	90.6	90.5	90.5	7.38	7.37	7.37	2.62	2.62	2.57	5	5.00
	15:12		Middle	3.0	16.00	16.00		8.39	8.39		31.84	31.84		90.4	90.5		7.36	7.37		2.51	2.51		5	
1/2/18	17:57	Cloudy	Middle	2.5	14.80	14.80	14.80	8.25	8.25	8.25	32.30	32.30	32.30	83.0	83.8	83.3	6.88	6.98	6.92	1.12	1.29	1.21	6	6.50
	17:58		Middle	2.5	14.80	14.80		8.25	8.25		32.30	32.30		83.6	82.6		6.94	6.86		1.25	1.16		7	
3/2/18	9:32	Fine	Middle	3.5	14.80	14.80	14.80	8.03	8.03	8.04	32.86	32.86	32.86	82.1	82.6	82.5	6.79	6.83	6.82	3.47	3.43	3.72	4	4.50
	9:34		Middle	3.5	14.80	14.80		8.05	8.05		32.86	32.86		83.1	82.0		6.87	6.78		3.96	4.01		5	
5/2/18	12:40	Fine	Middle	3.0	14.70	14.70	14.70	8.33	8.33	8.33	32.02	32.02	32.02	86.9	87.0	86.8	7.24	7.26	7.25	2.66	2.61	2.59	4	4.50
	12:42		Middle	3.0	14.70	14.70		8.33	8.33		32.02	32.02		86.6	86.8		7.23	7.25		2.56	2.54		5	
7/2/18	11:10	Fine	Middle	3.0	14.40	14.40	14.40	8.32	8.32	8.33	31.95	31.95	31.95	86.0	86.4	86.3	7.21	7.24	7.23	2.61	2.60	2.58	4	5.00
	11:12		Middle	3.0	14.40	14.40		8.33	8.33		31.95	31.95		86.3	86.4		7.23	7.25		2.52	2.57		6	
9/2/18	15:42	Fine	Middle	3.5	15.30	15.30	15.30	8.23	8.23	8.24	33.12	33.12	33.12	91.9	91.7	91.7	7.52	7.50	7.50	2.10	2.10	2.12	3	3.00
	15:44		Middle	3.5	15.30	15.30		8.24	8.24		33.12	33.12		91.7	91.6		7.50	7.49		2.13	2.16		3	
12/2/18	14:35	Fine	Middle	3.0	16.20	16.20	16.25	8.37	8.37	8.37	32.15	32.15	32.15	96.3	96.3	96.4	7.78	7.77	7.78	1.84	1.91	1.89	3	3.50
	14:37		Middle	3.0	16.30	16.30		8.37	8.37		32.15	32.15		96.6	96.4		7.80	7.78		1.91	1.90		4	
14/2/18	15:30	Fine	Middle	2.5	15.80	15.80	15.85	8.31	8.31	8.31	32.12	32.12	32.12	92.9	93.2	93.1	7.57	7.59	7.58	2.65	2.63	2.63	5	5.50
	15:32		Middle	2.5	15.90	15.90		8.31	8.31		32.11	32.11		93.2	93.1		7.58	7.57		2.62	2.61		6	
20/2/18	9:10	Fine	Middle	3.0	17.60	17.60	17.65	8.18	8.18	8.18	31.64	31.64	31.64	82.8	82.8	82.8	6.54	6.54	6.54	2.80	2.78	2.78	6	6.00
	9:12		Middle	3.0	17.70	17.70		8.18	8.18		31.63	31.63		83.0	82.6		6.55	6.53		2.78	2.75		6	
22/2/18	10:30	Cloudy	Middle	2.5	16.50	16.50	16.50	8.19	8.19	8.19	31.75	31.75	31.75	82.3	82.2	82.5	6.64	6.63	6.65	1.77	1.77	1.77	5	4.50
	10:32		Middle	2.5	16.50	16.50		8.19	8.19		31.75	31.75		82.5	82.8		6.65	6.67		1.78	1.76		4	
24/2/18	12:35	Cloudy	Middle	3.0	16.80	16.80	16.85	8.16	8.16	8.16	31.77	31.77	31.77	83.8	83.9	83.8	6.71	6.70	6.70	2.39	2.35	2.35	6	5.50
	12:37		Middle	3.0	16.90	16.90		8.16	8.16		31.76	31.76		83.8	83.6		6.70	6.68		2.32	2.32		5	
26/2/18	14:10	Cloudy	Middle	3.0	17.10	17.10	17.10	8.15	8.15	8.15	31.70	31.70	31.70	79.1	78.8	79.5	6.30	6.28	6.33	2.35	2.41	2.40	6	5.00
	14:12		Middle	3.0	17.10	17.10		8.15	8.15		31.69	31.69		80.0	80.2		6.37	6.38		2.42	2.40		4	

Remarks:  
Single underline denotes exceedance over Action Level.  
Double underline denotes exceedance over Limit Level.



**Water Monitoring Result at RW21-P789 - GEC / CRB / SHK  
Mid-Flood Tide**

Date	Time	Weather Condition	Sampling Depth		Water Temperature			pH		Salinity		DO Saturation		DO		Turbidity		Suspended Solids						
					°C			-		ppt		%		mg/L		NTU		mg/L						
			m	Value	Average	Value	Average	Value	Average	Value	Average	Value	Average	Value	Average	Value	Average	Value	Average					
27/1/18	-	Cloudy	Middle	-	-	-	#DIV/0!	-	-	#DIV/0!	-	-	#DIV/0!	-	-	#DIV/0!	-	-	#DIV/0!	-	#DIV/0!			
	-		Middle	-	-	-	-	-	-	-	-	-	-	-	-	-	-	-	-	-	-			
29/1/18	15:25	Cloudy	Middle	4.0	16.20	16.20	16.20	8.37	8.37	8.38	31.75	31.75	31.75	95.4	94.7	94.2	7.73	7.67	7.64	2.31	2.42	2.40	6	5.50
	15:27		Middle	4.0	16.20	16.20	16.20	8.39	8.39	8.38	31.75	31.75	31.75	93.4	93.2	94.2	7.58	7.57	7.64	2.47	2.38	2.40	5	5.50
1/2/18	18:25	Cloudy	Middle	4.0	15.10	15.10	15.10	8.28	8.28	8.28	32.35	32.35	32.35	84.3	84.5	84.1	7.40	7.42	7.38	1.13	1.20	1.16	6	7.00
	18:26		Middle	4.0	15.10	15.10	15.10	8.28	8.28	8.28	32.35	32.35	32.35	83.8	83.6	84.1	7.36	7.34	7.38	1.17	1.12	1.16	8	7.00
3/2/18	9:55	Fine	Middle	3.5	15.10	15.10	15.05	8.05	8.05	8.07	32.80	32.80	32.82	93.7	90.4	89.9	7.73	7.45	7.41	3.81	3.41	3.54	4	4.50
	9:57		Middle	3.5	15.00	15.00	15.05	8.09	8.09	8.07	32.83	32.83	32.82	88.8	86.5	89.9	7.32	7.13	7.41	3.46	3.46	3.54	5	4.50
5/2/18	9:35	Fine	Middle	4.0	14.50	14.50	14.45	8.22	8.22	8.24	32.32	32.32	32.33	88.8	88.7	88.6	7.43	7.42	7.42	6.01	6.09	6.09	4	5.00
	9:37		Middle	4.0	14.40	14.40	14.45	8.26	8.26	8.24	32.34	32.34	32.33	88.4	88.6	88.6	7.40	7.42	7.42	6.13	6.14	6.09	6	5.00
7/2/18	10:30	Fine	Middle	3.5	14.90	14.90	14.90	8.30	8.30	8.31	32.01	32.01	32.01	90.7	90.6	90.5	7.53	7.53	7.52	2.91	2.95	2.96	4	4.50
	10:32		Middle	3.5	14.90	14.90	14.90	8.31	8.31	8.31	32.01	32.01	32.01	90.4	90.2	90.5	7.51	7.49	7.52	2.98	2.99	2.96	5	4.50
9/2/18	16:00	Fine	Middle	3.5	15.40	15.40	15.45	8.24	8.24	8.25	33.13	33.13	33.13	81.1	83.3	83.8	6.11	6.22	6.56	3.63	3.63	3.63	4	4.50
	16:02		Middle	3.5	15.50	15.50	15.45	8.25	8.25	8.25	33.12	33.12	33.13	85.3	85.3	83.8	6.96	6.96	6.56	3.63	3.63	3.63	5	4.50
12/2/18	14:55	Fine	Middle	4.0	16.30	16.30	16.35	8.36	8.36	8.37	32.11	32.11	32.11	99.4	99.6	99.4	8.01	8.02	8.00	2.06	1.92	1.95	4	4.50
	14:57		Middle	4.0	16.40	16.40	16.35	8.37	8.37	8.37	32.11	32.11	32.11	99.4	99.0	99.4	8.01	7.94	8.00	1.91	1.91	1.95	5	4.50
14/2/18	15:48	Fine	Middle	3.5	16.10	16.10	16.20	8.30	8.30	8.31	31.81	31.81	174.91	93.4	94.3	94.1	7.57	7.64	7.62	1.91	1.88	1.89	4	3.00
	15:50		Middle	3.5	16.30	16.30	16.20	8.32	8.32	8.31	318.00	318.00	174.91	94.5	94.2	94.1	7.65	7.63	7.62	1.85	1.92	1.89	2	3.00
20/2/18	9:55	Fine	Middle	3.5	17.70	17.70	17.80	8.19	8.19	8.20	31.73	31.73	31.72	87.7	87.7	87.8	6.90	6.90	6.92	3.09	3.02	3.03	5	6.00
	9:57		Middle	3.5	17.90	17.90	17.80	8.20	8.20	8.20	31.70	31.70	31.72	87.9	87.7	87.8	6.91	6.96	6.92	3.01	2.98	3.03	7	6.00
22/2/18	10:45	Cloudy	Middle	4.0	16.60	16.60	16.60	8.21	8.21	8.21	31.85	31.85	31.85	90.6	80.5	88.0	7.28	7.22	7.26	3.68	3.56	3.58	3	4.00
	10:47		Middle	4.0	16.60	16.60	16.60	8.21	8.21	8.21	31.84	31.84	31.85	90.6	90.3	88.0	7.28	7.25	7.26	3.55	3.54	3.58	5	4.00
24/2/18	9:00	Cloudy	Middle	3.5	17.00	17.00	17.05	8.06	8.06	8.08	31.96	31.96	31.97	79.7	79.3	79.2	6.31	6.31	6.30	1.20	1.22	1.22	5	4.50
	9:02		Middle	3.5	17.10	17.10	17.05	8.10	8.10	8.08	31.97	31.97	31.97	79.1	78.8	79.2	6.30	6.27	6.30	1.23	1.23	1.22	4	4.50
26/2/18	14:30	Cloudy	Middle	4.0	17.30	17.30	17.35	8.16	8.16	8.16	31.82	31.81	31.81	86.1	85.3	85.6	6.82	6.76	6.78	2.35	2.35	2.35	6	5.50
	14:32		Middle	4.0	17.40	17.40	17.35	8.16	8.16	8.16	31.81	31.81	31.81	85.4	85.6	85.6	6.77	6.78	6.78	2.35	2.35	2.35	5	5.50

Remarks:  
Single underline denotes exceedance over Action Level.  
Double underline denotes exceedance over Limit Level.



**Water Monitoring Result at WSD19 - Sheung Wan  
Mid-Flood Tide**

Date	Time	Weather Condition	Sampling Depth	Water Temperature		pH		Salinity		DO Saturation		DO		Turbidity		Suspended Solids								
				°C		-		ppt		%		mg/L		NTU		mg/L								
				m	Value	Average	Value	Average	Value	Average	Value	Average	Value	Average	Value	Average	Value	Average						
27/1/18	13:50	Cloudy	Middle	4.0	17.20	17.20	17.20	8.34	8.34	8.35	31.77	31.77	31.77	99.3	99.3	98.4	7.89	7.89	7.82	3.28	3.22	3.35	4	5.00
	13:52		Middle	4.0	17.20	17.20	17.20	8.36	8.36	8.35	31.77	31.77	31.77	97.8	97.0	98.4	7.78	7.71	7.82	3.47	3.42	3.35	6	
29/1/18	13:30	Cloudy	Middle	3.5	15.90	15.90	15.85	8.22	8.22	8.26	31.81	31.81	31.82	91.7	91.5	91.3	7.49	7.48	7.46	4.51	4.53	4.47	8	7.50
	13:32		Middle	3.5	15.80	15.80	15.85	8.29	8.29	8.26	31.83	31.83	31.82	91.3	90.8	91.3	7.45	7.42	7.46	4.42	4.40	4.47	7	
1/2/18	16:50	Cloudy	Middle	3.5	15.20	15.20	15.20	8.17	8.17	8.18	32.16	32.16	32.16	81.6	83.9	82.8	6.73	6.93	6.84	2.83	2.23	2.68	9	9.50
	16:51		Middle	3.5	15.20	15.20	15.20	8.18	8.18	8.18	32.16	32.16	32.16	83.5	82.2	82.8	6.91	6.80	6.84	2.61	3.03	2.68	10	
3/2/18	8:15	Fine	Middle	3.5	13.80	13.80	13.80	6.75	6.76	6.93	32.38	32.39	32.46	72.7	70.5	73.6	6.16	5.84	6.18	6.54	6.55	6.55	4	3.00
	8:17		Middle	3.5	13.80	13.80	13.80	7.09	7.11	6.93	32.54	32.54	32.46	76.2	74.8	73.6	6.40	6.31	6.18	6.56	6.55	6.55	2	
5/2/18	11:15	Fine	Middle	4.0	14.40	14.40	14.35	8.25	8.25	8.26	31.93	31.93	31.94	88.7	88.8	88.6	7.44	7.45	7.44	2.94	2.89	2.88	5	6.00
	11:17		Middle	4.0	14.30	14.30	14.35	8.27	8.27	8.26	31.95	31.95	31.94	88.5	88.5	88.6	7.44	7.44	7.44	2.85	2.84	2.88	7	
7/2/18	9:30	Fine	Middle	4.0	14.70	14.70	14.65	8.24	8.24	8.26	32.05	32.05	32.05	86.5	86.8	86.9	7.22	7.24	7.25	3.86	3.84	3.82	5	4.50
	9:32		Middle	4.0	14.60	14.60	14.65	8.27	8.27	8.26	32.05	32.05	32.05	87.0	87.1	86.9	7.26	7.27	7.25	3.82	3.76	3.82	4	
9/2/18	14:28	Fine	Middle	3.5	15.90	15.90	16.10	7.38	7.39	7.57	32.62	32.62	32.61	91.6	91.1	90.7	7.39	7.35	7.32	4.34	4.14	4.17	5	5.00
	14:30		Middle	3.5	16.30	16.30	16.10	7.76	7.76	7.57	32.59	32.59	32.61	90.1	90.0	90.7	7.27	7.26	7.32	4.11	4.09	4.17	5	
12/2/18	13:30	Fine	Middle	3.5	16.80	16.80	16.80	8.20	8.20	8.23	32.20	32.20	32.20	97.0	97.3	97.2	7.75	7.76	7.76	2.66	2.65	2.67	7	7.00
	13:32		Middle	3.5	16.80	16.80	16.80	8.25	8.25	8.23	32.20	32.20	32.20	97.2	97.2	97.2	7.76	7.76	7.76	2.67	2.70	2.67	7	
14/2/18	17:00	Fine	Middle	4.0	16.20	16.20	16.30	8.27	8.27	8.28	32.14	32.14	32.14	91.5	92.4	92.0	7.37	7.44	7.41	4.13	4.13	4.14	4	4.50
	17:02		Middle	4.0	16.40	16.40	16.30	8.29	8.29	8.28	32.14	32.14	32.14	92.2	91.7	92.0	7.43	7.39	7.41	4.13	4.18	4.14	5	
20/2/18	10:40	Fine	Middle	4.0	17.90	17.90	18.05	8.18	8.18	8.19	31.68	31.68	31.68	89.4	89.8	89.5	6.99	7.02	7.00	2.83	2.80	2.85	6	6.00
	10:42		Middle	4.0	18.20	18.20	18.05	8.19	8.19	8.19	31.67	31.67	31.68	89.4	89.4	89.5	6.99	6.99	7.00	2.89	2.88	2.85	6	
22/2/18	9:20	Cloudy	Middle	3.5	17.00	17.00	17.00	8.08	8.08	8.10	31.88	31.88	31.88	85.2	85.3	85.1	6.80	6.80	6.80	4.30	4.26	4.24	5	5.50
	9:22		Middle	3.5	17.00	17.00	17.00	8.12	8.12	8.10	31.88	31.88	31.88	85.4	84.4	85.1	6.82	6.77	6.80	4.21	4.18	4.24	6	
24/2/18	10:15	Cloudy	Middle	4.0	17.00	17.00	17.05	8.16	8.16	8.16	31.83	31.83	31.83	88.6	88.6	88.4	7.05	7.05	7.04	4.43	4.50	4.41	9	8.00
	10:17		Middle	4.0	17.10	17.10	17.05	8.16	8.16	8.16	31.83	31.83	31.83	88.3	88.1	88.4	7.03	7.01	7.04	4.35	4.37	4.41	7	
26/2/18	13:10	Cloudy	Middle	3.5	17.60	17.60	17.60	8.07	8.07	8.07	31.93	31.93	31.93	86.9	66.3	81.6	6.84	6.73	6.81	4.22	4.36	4.33	10	9.00
	13:12		Middle	3.5	17.60	17.60	17.60	8.07	8.07	8.07	31.93	31.93	31.93	86.7	86.6	81.6	6.83	6.83	6.81	4.37	4.37	4.33	8	

Remarks:  
Single underline denotes exceedance over Action Level.  
Double underline denotes exceedance over Limit Level.





**Water Monitoring Result at C7 - Windsor House  
Mid-Ebb Tide**

Date	Time	Weather Condition	Sampling Depth		Water Temperature		pH			Salinity		DO Saturation		DO		Turbidity		Suspended Solids						
					°C		-			ppt		%		mg/L		NTU		mg/L						
					Value	Average	Value	Average	Value	Average	Value	Average	Value	Average	Value	Average	Value	Average	Value	Average				
27/1/18	21:30	Cloudy	Middle	-	17.20	17.20	17.20	8.25	8.25	8.25	32.13	32.13	32.13	86.4	87.1	86.6	6.85	6.91	6.87	1.07	1.06	1.06	3	3.00
	21:31		Middle	-	17.20	17.20		8.25	8.25		32.13	32.13		87.2	85.5		6.92	6.78		1.09	1.02		3	
29/1/18	23:15	Cloudy	Middle	-	15.70	15.70	15.70	8.27	8.27	8.27	32.11	32.11	32.11	81.4	81.0	81.2	6.67	6.63	6.65	1.13	1.20	1.21	4	6.00
	23:16		Middle	-	15.70	15.70		8.27	8.27		32.11	32.11		81.1	81.3		6.64	6.66		1.24	1.27		8	
1/2/18	11:40	Fine	Middle	-	15.90	15.90	15.85	8.23	8.23	8.24	31.61	31.61	31.61	84.8	85.1	85.0	6.93	6.96	6.95	2.04	2.01	2.02	2	2.00
	11:42		Middle	-	15.80	15.80		8.25	8.25		31.62	31.61		85.2	85.0		6.96	6.95		2.01	2.01		2	
3/2/18	15:06	Fine	Middle	-	15.40	15.40	15.35	8.18	8.18	8.19	32.46	32.46	32.48	80.5	82.1	82.5	6.61	6.79	6.79	2.89	2.87	2.87	4	3.50
	15:08		Middle	-	15.30	15.30		8.20	8.20		32.49	32.49		83.6	83.9		6.86	6.89		2.86	2.84		3	
5/2/18	15:30	Fine	Middle	-	15.40	15.40	15.40	8.26	8.26	8.26	31.73	31.73	31.73	90.9	90.7	90.7	7.49	7.48	7.48	2.35	2.34	2.34	5	5.00
	15:32		Middle	-	15.40	15.40		8.26	8.26		31.72	31.72		90.6	90.7		7.46	7.48		2.34	2.34		5	
7/2/18	17:20	Cloudy	Middle	-	15.40	15.40	15.35	8.30	8.30	8.31	31.60	31.60	31.60	84.3	84.3	84.5	6.97	6.97	6.98	3.68	3.55	3.56	4	3.00
	17:22		Middle	-	15.30	15.30		8.31	8.31		31.60	31.60		84.8	84.5		7.01	6.98		3.51	3.50		2	
9/2/18	21:47	Cloudy	Middle	-	15.90	15.90	15.90	8.28	8.28	8.28	32.31	32.31	32.31	81.3	82.3	81.8	6.60	6.68	6.64	7.25	7.31	7.19	3	4.00
	21:48		Middle	-	15.90	15.90		8.28	8.28		32.31	32.31		81.8	81.7		6.64	6.63		7.07	7.11		5	
12/2/18	23:24	Cloudy	Middle	-	15.80	15.80	15.80	8.35	8.35	8.39	32.44	32.44	32.44	88.3	88.1	87.9	7.20	7.18	7.16	1.57	1.69	1.67	4	3.00
	23:25		Middle	-	15.80	15.80		8.50	8.35		32.44	32.44		88.1	87.2		7.17	7.10		1.71	1.70		2	
15/2/18	0:23	Cloudy	Middle	-	16.60	16.60	16.60	8.22	8.22	8.22	32.17	32.17	32.17	81.8	82.9	83.0	6.56	6.64	6.64	1.37	1.44	1.44	2	3.50
	0:24		Middle	-	16.60	16.60		8.22	8.22		32.17	32.17		83.6	83.8		6.62	6.72		1.55	1.40		5	
20/2/18	15:50	Cloudy	Middle	-	18.00	18.00	18.10	8.19	8.19	8.19	31.57	31.57	31.56	84.3	84.9	84.9	6.59	6.64	6.64	7.91	7.90	7.92	7	7.50
	15:52		Middle	-	18.20	18.20		8.19	8.19		31.55	31.55		85.3	85.2		6.67	6.66		7.93	7.94		8	
22/2/18	16:50	Cloudy	Middle	-	16.40	16.40	16.35	8.18	8.18	8.18	31.61	31.61	31.61	84.0	84.3	84.3	6.80	6.82	6.82	5.19	5.20	4.70	6	6.50
	16:52		Middle	-	16.30	16.30		8.17	8.17		31.61	31.61		84.3	84.6		6.82	6.84		4.21	4.19		7	
24/2/18	18:40	Cloudy	Middle	-	17.60	17.60	17.60	8.06	8.06	8.06	32.08	32.08	32.08	75.3	76.9	77.1	5.92	6.05	6.03	1.63	1.72	1.75	<2	4.00
	18:41		Middle	-	17.60	17.60		8.06	8.06		32.08	32.08		77.3	78.8		6.07	6.09		1.84	1.79		4	
26/2/18	21:53	Cloudy	Middle	-	17.30	17.30	17.30	8.03	8.03	8.03	32.19	32.19	32.19	78.9	79.2	79.3	6.25	6.27	6.28	1.43	1.51	1.52	<2	3.00
	21:54		Middle	-	17.30	17.30		8.03	8.03		32.19	32.19		79.6	79.5		6.30	6.29		1.60	1.55		3	

Remarks:  
Single underline denotes exceedance over Action Level.  
Double underline denotes exceedance over Limit Level.



**Water Monitoring Result at C1 - HKCEC  
Mid-Ebb Tide**

Date	Time	Weather Condition	Sampling Depth		Water Temperature		pH			Salinity			DO Saturation		DO		Turbidity		Suspended Solids					
					°C		-			ppt			%		mg/L		NTU		mg/L					
					Value	Average	Value	Average	Value	Average	Value	Average	Value	Average	Value	Average	Value	Average	Value	Average				
27/1/18	20:02	Cloudy	Middle	3.0	17.10	17.10	17.10	8.32	8.32	8.32	32.35	32.35	32.35	80.0	82.3	81.4	6.93	7.08	7.02	1.01	1.07	1.12	5	5.00
	20:03		Middle	3.0	17.10	17.10		8.32	8.32		32.35	32.35		82.1	81.3		7.07	6.98		1.18	1.20		5	
29/1/18	21:43	Cloudy	Middle	3.0	14.30	14.30	14.30	8.32	8.32	8.32	32.32	32.32	32.32	84.4	84.1	87.1	7.08	7.06	7.10	1.14	1.25	1.25	4	4.00
	21:44		Middle	3.0	14.30	14.30		8.32	8.32		32.32	32.32		84.9	95.0		7.13	7.13		1.29	1.33		4	
1/2/18	14:35	Fine	Middle	3.0	15.70	15.70	15.65	8.34	8.34	8.34	31.91	31.91	31.92	86.7	87.0	86.6	7.10	7.12	7.09	4.06	4.11	4.07	<2	<u>≤2</u>
	14:37		Middle	3.0	15.60	15.60		8.34	8.34		31.93	31.93		86.3	86.3		7.07	7.07		4.11	4.00		<2	
3/2/18	14:34	Fine	Middle	3.0	15.00	15.00	14.95	8.23	8.23	8.23	32.81	32.87	32.85	85.0	83.4	83.1	7.01	6.88	6.85	2.34	2.36	2.36	2	2.50
	14:36		Middle	3.0	14.90	14.90		8.23	8.23		32.86	32.86		82.5	81.3		6.81	6.71		2.37	2.37		3	
5/2/18	17:50	Fine	Middle	3.0	14.60	14.60	14.60	8.33	8.33	8.33	32.00	32.00	32.01	86.8	86.9	86.8	7.26	7.27	7.26	2.34	2.30	2.27	4	4.00
	17:52		Middle	3.0	14.60	14.60		8.33	8.33		32.01	32.01		86.7	86.8		7.25	7.26		2.22	2.23		4	
7/2/18	16:10	Cloudy	Middle	3.0	15.00	15.00	15.00	8.32	8.32	8.32	31.97	31.97	31.97	86.8	87.3	87.1	7.20	7.24	7.23	1.60	1.54	1.53	5	4.00
	16:12		Middle	3.0	15.00	15.00		8.32	8.32		31.96	31.96		87.1	87.3		7.22	7.24		1.51	1.48		3	
9/2/18	20:07	Cloudy	Middle	3.0	15.70	15.70	15.70	8.27	8.27	8.27	32.63	32.63	32.63	80.1	80.0	82.7	6.51	6.51	6.72	1.03	1.09	1.07	3	3.00
	20:08		Middle	3.0	15.70	15.70		8.27	8.27		32.63	32.63		85.8	85.0		6.97	6.90		1.06	1.10		3	
12/2/18	22:51	Cloudy	Middle	3.0	15.60	15.60	15.65	8.30	8.30	8.30	32.63	32.63	32.63	87.5	84.6	85.1	7.15	7.02	6.98	1.49	1.62	1.59	3	2.50
	22:52		Middle	3.0	15.60	15.80		8.30	8.30		32.63	32.63		83.5	84.8		6.83	6.93		1.54	1.69		2	
15/2/18	22:15	Cloudy	Middle	3.0	16.60	16.60	16.60	8.24	8.24	8.24	32.46	32.46	32.46	81.8	82.6	82.1	6.54	6.60	6.56	1.66	1.74	1.78	7	7.50
	22:16		Middle	3.0	16.60	16.60		8.24	8.24		32.46	32.46		81.5	82.4		6.52	6.59		1.81	1.89		8	
20/2/18	14:50	Cloudy	Middle	2.5	18.10	18.10	18.15	8.19	8.19	8.20	31.76	31.76	31.76	86.4	86.4	86.6	6.74	6.74	6.75	1.87	1.83	1.81	2	3.00
	14:52		Middle	2.5	18.20	18.20		8.20	8.20		31.75	31.75		86.6	86.9		6.75	6.77		1.81	1.72		4	
22/2/18	15:55	Cloudy	Middle	3.0	16.40	16.40	16.40	8.22	8.22	8.22	31.90	31.90	31.90	82.9	83.0	82.9	6.68	6.69	6.68	1.92	1.91	1.91	5	4.50
	15:57		Middle	3.0	16.40	16.40		8.22	8.22		31.90	31.90		82.9	82.8		6.68	6.67		1.91	1.91		4	
24/2/18	19:31	Cloudy	Middle	3.0	17.20	17.20	17.20	8.10	8.10	8.10	32.45	32.45	32.45	87.8	86.7	86.6	6.93	6.84	6.84	1.64	1.73	1.63	<2	<u>≤2</u>
	19:32		Middle	3.0	17.20	17.20		8.10	8.10		32.45	32.45		86.3	85.7		6.81	6.76		1.51	1.62		<2	
26/2/18	19:41	Cloudy	Middle	3.0	16.90	16.90	16.90	8.14	8.14	8.14	32.37	32.37	32.37	82.3	82.6	82.1	6.55	6.57	6.53	1.81	1.86	1.80	6	7.00
	19:42		Middle	3.0	16.90	16.90		8.14	8.14		32.37	32.37		82.1	81.5		6.53	6.48		1.77	1.75		8	

Remarks:  
Single underline denotes exceedance over Action Level.  
Double underline denotes exceedance over Limit Level.



**Water Monitoring Result at P1 - HKCEC Phase I  
Mid-Ebb Tide**

Date	Time	Weather Condition	Sampling Depth		Water Temperature		pH			Salinity			DO Saturation		DO		Turbidity		Suspended Solids					
					°C		-			ppt			%		mg/L		NTU		mg/L					
					Value	Average	Value	Average	Value	Average	Value	Average	Value	Average	Value	Average	Value	Average	Value	Average				
27/1/18	19:38	Cloudy	Middle	3.0	17.20	17.20	17.20	8.32	8.32	8.32	32.28	32.28	32.28	83.7	83.4	83.5	7.19	7.16	7.17	1.31	1.29	1.27	4	6.00
	19:39		Middle	3.0	17.20	17.20		8.32	8.32	8.32	32.28	32.28		83.6	83.1		83.5	7.18		7.14	7.17		1.25	
29/1/18	21:12	Cloudy	Middle	3.0	14.00	14.00	14.00	8.32	8.32	8.32	32.32	32.32	32.32	86.9	87.1	86.9	7.33	7.35	7.33	1.30	1.26	1.24	3	3.00
	21:13		Middle	3.0	14.00	14.00		8.32	8.32	8.32	32.32	32.32		86.5	86.9		86.9	7.31		7.33	7.33		1.17	
1/2/18	14:15	Fine	Middle	3.0	15.30	15.30	15.28	8.32	8.32	8.33	31.93	31.93	31.93	90.9	91.2	90.7	7.50	7.53	7.49	2.83	2.83	2.86	3	2.50
	14:17		Middle	3.0	15.20	15.30		8.33	8.33	8.33	31.93	31.93		90.1	90.5		90.7	7.44		7.47	7.49		2.89	
3/2/18	14:18	Fine	Middle	3.0	14.90	14.90	14.90	8.16	8.16	8.18	31.89	32.89	32.65	80.4	84.2	85.4	6.64	6.95	7.05	3.46	3.46	3.46	3	3.00
	14:20		Middle	3.0	14.90	14.90		8.19	8.19	8.18	32.90	32.90		87.3	89.5		85.4	7.20		7.39	7.05		3.45	
5/2/18	17:30	Fine	Middle	3.0	14.50	14.50	14.50	8.29	8.29	8.30	32.01	32.01	32.01	90.5	90.2	90.2	7.57	7.55	7.55	2.31	2.33	2.40	3	3.00
	17:32		Middle	3.0	14.50	14.50		8.31	8.31	8.30	32.00	32.00		90.2	89.9		90.2	7.55		7.52	7.55		2.46	
7/2/18	15:50	Cloudy	Middle	3.0	15.20	15.20	15.25	8.33	8.33	8.33	32.04	32.04	32.04	89.8	89.2	89.3	7.41	7.35	7.36	3.42	3.49	3.41	6	6.50
	15:52		Middle	3.0	15.30	15.30		8.32	8.32	8.33	32.04	32.04		89.2	88.8		89.3	7.35		7.32	7.36		3.36	
9/2/18	19:40	Cloudy	Middle	3.0	15.80	15.80	15.80	8.29	8.29	8.29	32.62	32.62	32.62	84.0	85.6	85.4	6.82	6.95	6.93	1.13	1.10	1.10	3	3.50
	19:41		Middle	3.0	15.80	15.80		8.29	8.29	8.29	32.62	32.62		86.3	85.5		85.4	7.01		6.94	6.93		1.11	
12/2/18	22:27	Cloudy	Middle	3.0	15.30	15.30	15.30	8.29	8.29	8.29	32.64	32.64	32.64	85.3	84.8	84.4	6.87	6.83	6.80	1.32	1.37	1.31	4	3.50
	22:28		Middle	3.0	15.30	15.30		8.29	8.29	8.29	32.64	32.64		84.1	83.4		84.4	6.78		6.72	6.80		1.28	
15/2/18	21:47	Cloudy	Middle	3.0	16.80	16.80	16.80	8.27	8.27	8.27	32.58	32.58	32.58	85.9	85.8	84.6	6.85	6.84	6.75	1.69	1.70	1.72	6	8.00
	21:48		Middle	3.0	16.80	16.80		8.27	8.27	8.27	32.58	32.58		84.3	82.4		84.6	6.72		6.57	6.75		1.72	
20/2/18	14:30	Cloudy	Middle	2.5	19.80	19.80	19.90	8.15	8.15	8.16	31.63	31.63	31.65	89.2	89.4	89.5	6.74	6.76	6.76	0.89	0.86	0.86	3	3.50
	14:32		Middle	2.5	20.00	20.00		8.16	8.16	8.16	31.67	31.67		89.5	89.7		89.5	6.76		6.77	6.76		0.85	
22/2/18	15:35	Cloudy	Middle	3.0	16.40	16.40	16.40	8.22	8.22	8.22	31.89	31.89	31.89	87.6	87.8	87.7	7.06	7.08	7.07	2.64	2.60	2.59	10	10.00
	15:37		Middle	3.0	16.40	16.40		8.22	8.22	8.22	31.88	31.88		87.6	87.7		87.7	7.06		7.06	7.07		2.55	
24/2/18	19:03	Cloudy	Middle	3.0	17.40	17.40	17.40	8.12	8.12	8.12	32.35	32.35	32.35	82.0	81.8	81.3	6.47	6.45	6.41	1.67	1.61	1.61	<2	<2
	19:04		Middle	3.0	17.40	17.40		8.12	8.12	8.12	32.35	32.35		81.2	80.2		81.3	6.40		6.31	6.41		1.57	
26/2/18	19:19	Cloudy	Middle	3.0	17.00	17.00	17.00	8.15	8.15	8.15	32.37	32.37	32.37	85.8	86.2	85.7	6.82	6.85	6.81	1.88	1.86	1.90	8	7.50
	19:20		Middle	3.0	17.00	17.00		8.15	8.15	8.15	32.37	32.37		85.7	85.2		85.7	6.81		6.77	6.81		1.91	

Remarks:  
Single underline denotes exceedance over Action Level.  
Double underline denotes exceedance over Limit Level.



**Water Monitoring Result at P3 - APA  
Mid-Ebb Tide**

Date	Time	Weather Condition	Sampling Depth		Water Temperature		pH			Salinity			DO Saturation		DO		Turbidity		Suspended Solids					
					°C		-			ppt			%		mg/L		NTU		mg/L					
					Value	Average	Value	Average	Value	Average	Value	Average	Value	Average	Value	Average	Value	Average	Value	Average				
27/1/18	19:45	Cloudy	Middle	3.0	17.20	17.20	17.20	8.34	8.34	8.34	32.33	32.33	32.33	82.6	83.0	82.9	7.09	7.13	7.12	1.07	1.10	1.11	7	6.00
	19:46		Middle	3.0	17.20	17.20		8.34	8.34		32.33	32.33		83.3	82.7		7.15	7.10		1.14	1.11		5	
29/1/18	21:18	Cloudy	Middle	3.0	14.40	14.40	14.40	8.32	8.32	8.32	32.33	32.33	32.33	86.1	86.1	86.0	7.22	7.23	7.21	1.21	1.24	1.25	4	4.00
	21:19		Middle	3.0	14.40	14.40		8.32	8.32		32.33	32.33		85.9	85.8		7.21	7.19		1.27	1.28		4	
1/2/18	14:20	Fine	Middle	3.0	15.50	15.50	15.45	8.34	8.34	8.34	31.92	31.92	31.92	89.6	89.7	89.3	7.36	7.36	7.35	2.82	2.91	2.91	6	5.50
	14:22		Middle	3.0	15.40	15.40		8.34	8.34		31.92	31.92		89.1	88.9		7.34	7.33		2.96	2.95		5	
3/2/18	14:22	Fine	Middle	3.0	15.00	15.00	15.00	8.20	8.20	8.21	32.89	32.89	32.90	87.6	85.5	85.6	7.22	7.05	7.03	2.83	2.72	2.74	5	4.00
	14:24		Middle	3.0	15.00	15.00		8.21	8.21		32.90	32.90		85.2	83.9		6.94	6.91		2.71	2.71		3	
5/2/18	17:35	Fine	Middle	3.0	14.20	14.20	14.20	8.32	8.32	8.32	32.01	32.01	32.01	90.4	90.4	90.4	7.62	7.62	7.62	2.23	2.23	2.23	5	5.00
	17:37		Middle	3.0	14.20	14.20		8.32	8.32		32.01	32.01		90.3	90.6		7.61	7.63		2.23	2.24		5	
7/2/18	15:55	Cloudy	Middle	3.0	15.00	15.00	15.00	8.32	8.32	8.32	31.97	31.97	31.97	89.1	89.0	88.9	7.39	7.38	7.37	3.28	3.27	3.26	4	5.00
	15:57		Middle	3.0	15.00	15.00		8.32	8.32		31.96	31.96		88.9	88.7		7.37	7.35		3.25	3.22		6	
9/2/18	19:47	Cloudy	Middle	3.0	15.70	15.70	15.70	8.29	8.29	8.29	32.64	32.64	32.64	83.7	84.9	85.3	6.81	6.94	6.95	1.21	1.30	1.26	4	3.50
	19:48		Middle	3.0	15.70	15.70		8.29	8.29		32.64	32.64		86.5	86.0		7.04	6.99		1.25	1.29		3	
12/2/18	22:33	Cloudy	Middle	3.0	15.40	15.40	15.40	8.30	8.30	8.30	32.66	32.66	32.66	87.9	87.0	86.9	7.19	7.10	7.11	1.77	1.72	1.71	3	3.00
	22:34		Middle	3.0	15.40	15.40		8.30	8.30		32.66	32.66		86.6	86.0		7.09	7.04		1.68	1.65		<2	
15/2/18	21:53	Cloudy	Middle	3.0	16.70	16.70	16.70	8.28	8.28	8.28	32.60	32.60	32.60	87.3	85.6	85.4	6.97	6.80	6.81	2.03	2.05	2.01	4	4.00
	21:54		Middle	3.0	16.70	16.70		8.28	8.28		32.60	32.60		84.4	84.2		6.74	6.72		1.98	1.96		4	
20/2/18	14:35	Cloudy	Middle	2.5	18.60	18.60	18.70	8.18	8.18	8.18	31.76	31.76	31.76	88.0	88.5	88.2	6.80	6.83	6.81	1.51	1.49	1.46	3	4.00
	14:37		Middle	2.5	18.80	18.80		8.18	8.18		31.75	31.75		88.3	87.9		6.81	6.78		1.47	1.36		5	
22/2/18	15:40	Cloudy	Middle	3.0	16.20	16.20	16.25	8.23	8.23	8.23	31.90	31.90	31.90	86.5	86.5	86.6	7.00	7.00	7.00	2.24	2.29	2.29	6	6.00
	15:42		Middle	3.0	16.30	16.30		8.23	8.23		31.90	31.90		86.5	86.7		6.99	7.01		2.30	2.31		6	
24/2/18	19:09	Cloudy	Middle	3.0	17.20	17.20	17.20	8.11	8.11	8.11	32.37	32.37	32.37	85.8	86.9	85.5	6.70	6.87	6.73	1.47	1.39	1.35	2	2.00
	19:10		Middle	3.0	17.20	17.20		8.11	8.11		32.37	32.37		84.3	84.9		6.66	6.70		1.24	1.31		<2	
26/2/18	19:24	Cloudy	Middle	3.0	16.80	16.80	16.80	8.14	8.14	8.14	32.36	32.36	32.36	80.0	79.8	79.3	6.38	6.36	6.32	1.72	1.70	1.72	7	7.00
	19:25		Middle	3.0	16.80	16.80		8.14	8.14		32.36	32.36		79.3	78.0		6.32	6.22		1.75	1.71		<2	

Remarks:  
Single underline denotes exceedance over Action Level.  
Double underline denotes exceedance over Limit Level.



**Water Monitoring Result at P4 - SOC  
Mid-Ebb Tide**

Date	Time	Weather Condition	Sampling Depth		Water Temperature		pH			Salinity			DO Saturation		DO		Turbidity		Suspended Solids					
					°C		-			ppt			%		mg/L		NTU		mg/L					
					Value	Average	Value	Average	Value	Average	Value	Average	Value	Average	Value	Average	Value	Average	Value	Average				
27/1/18	19:52	Cloudy	Middle	3.0	17.10	17.10	17.10	8.34	8.34	8.34	32.32	32.32	32.32	81.1	81.5	81.8	6.97	7.05	7.04	1.46	1.32	1.39	5	4.50
	19:53		Middle	3.0	17.10	17.10		8.34	8.34		32.32	32.32		82.4	82.0		7.08	7.05		1.40	1.37		4	
29/1/18	21:25	Cloudy	Middle	3.0	14.30	14.30	14.30	8.32	8.32	8.32	32.33	32.33	32.33	84.3	83.9	84.4	7.07	7.04	7.09	1.10	1.07	1.06	8	6.00
	21:26		Middle	3.0	14.30	14.30		8.32	8.32		32.33	32.33		85.0	84.5		7.14	7.09		1.06	1.02		4	
1/2/18	14:25	Fine	Middle	3.0	15.40	15.40	15.40	8.34	8.34	8.34	31.92	31.92	31.92	88.4	88.8	88.5	7.24	7.30	7.27	2.89	2.65	2.71	5	4.00
	14:27		Middle	3.0	15.40	15.40		8.34	8.34		31.92	31.92		88.8	88.0		7.30	7.23		2.64	2.65		3	
3/2/18	14:26	Fine	Middle	3.0	15.00	15.00	15.00	8.22	8.22	8.22	32.87	32.87	32.89	85.3	85.4	85.0	7.05	7.04	7.01	2.97	2.85	3.06	2	2.50
	14:28		Middle	3.0	15.00	15.00		8.22	8.22		32.91	32.91		85.2	83.9		7.03	6.92		2.99	3.42		3	
5/2/18	17:40	Fine	Middle	3.0	14.40	14.40	14.40	8.32	8.32	8.33	32.01	32.01	32.01	89.4	89.6	89.6	7.50	7.52	7.52	2.43	2.37	2.42	5	4.00
	17:42		Middle	3.0	14.40	14.40		8.33	8.33		32.01	32.01		89.6	89.8		7.52	7.53		2.44	2.45		3	
7/2/18	16:00	Cloudy	Middle	3.0	14.90	14.90	14.90	8.32	8.32	8.32	31.95	31.95	31.95	88.1	87.9	88.2	7.31	7.30	7.32	3.45	3.42	3.42	6	7.00
	16:02		Middle	3.0	14.90	14.90		8.32	8.32		31.95	31.95		88.4	88.3		7.33	7.33		3.42	3.40		8	
9/2/18	19:53	Cloudy	Middle	3.0	15.60	15.60	15.65	8.29	8.29	8.29	32.65	32.65	32.65	82.2	84.4	84.2	6.69	6.92	6.89	1.20	1.18	1.18	3	3.00
	19:54		Middle	3.0	15.70	15.70		8.29	8.29		32.65	32.65		87.0	83.1		7.08	6.86		1.19	1.16		3	
12/2/18	22:40	Cloudy	Middle	3.0	15.40	15.40	15.40	8.00	8.30	8.23	32.64	32.64	32.64	85.5	84.9	84.5	6.99	6.94	6.91	1.44	1.50	1.52	8	8.00
	22:41		Middle	3.0	15.40	15.40		8.30	8.30		32.64	32.64		84.0	83.6		6.87	6.84		1.57	1.55		<2	
15/2/18	21:58	Cloudy	Middle	3.0	16.90	16.90	16.90	8.27	8.27	8.27	32.59	32.59	32.59	84.3	84.6	83.9	6.70	6.73	6.67	1.86	1.90	1.85	6	5.50
	21:59		Middle	3.0	16.90	16.90		8.27	8.27		32.59	32.59		83.9	82.6		6.67	6.56		1.83	1.80		5	
20/2/18	14:40	Cloudy	Middle	2.5	18.20	18.20	18.30	8.19	8.19	8.18	31.77	31.77	31.76	87.3	87.2	87.4	6.79	6.78	6.79	1.21	1.20	1.21	4	4.00
	14:42		Middle	2.5	18.40	18.40		8.17	8.17		31.75	31.75		87.3	87.6		6.79	6.81		1.20	1.21		4	
22/2/18	15:45	Cloudy	Middle	3.0	16.30	16.30	16.30	8.23	8.23	8.23	31.90	31.90	31.90	84.6	85.2	85.0	6.84	6.89	6.87	2.35	2.42	2.40	6	6.00
	15:47		Middle	3.0	16.30	16.30		8.23	8.23		31.90	31.90		85.0	85.0		6.87	6.87		2.43	2.39		6	
24/2/18	19:15	Cloudy	Middle	3.0	17.30	17.30	17.30	8.12	8.12	8.12	32.36	32.36	32.36	83.7	84.9	84.6	6.61	6.70	6.68	1.44	1.40	1.50	<2	<2
	19:16		Middle	3.0	17.30	17.30		8.12	8.12		32.36	32.36		85.4	84.5		6.75	6.67		1.51	1.64		<2	
26/2/18	19:31	Cloudy	Middle	3.0	16.90	16.90	16.90	8.15	8.15	8.15	32.37	32.37	32.37	81.8	83.1	82.8	6.51	6.62	6.60	1.66	1.52	1.60	3	3.00
	19:32		Middle	3.0	16.90	16.90		8.15	8.15		32.37	32.37		83.5	82.8		6.65	6.60		1.59	1.63		3	

Remarks:  
Single underline denotes exceedance over Action Level.  
Double underline denotes exceedance over Limit Level.



**Water Monitoring Result at P5 - WCT / RT / IT  
Mid-Ebb Tide**

Date	Time	Weather Condition	Sampling Depth		Water Temperature		pH			Salinity		DO Saturation		DO		Turbidity		Suspended Solids						
					°C		-			ppt		%		mg/L		NTU		mg/L						
					Value	Average	Value	Average	Value	Average	Value	Average	Value	Average	Value	Average	Value	Average	Value	Average				
27/1/18	19:58	Cloudy	Middle	3.0	17.10	17.10	17.10	8.30	8.33	8.32	32.34	32.34	32.35	83.2	85.6	83.2	7.15	7.10	7.09	1.21	1.29	1.26	6	6.50
	19:59		Middle	3.0	17.10	17.10		8.33	8.33	8.32	32.35	32.35		32.35	82.0		81.8	83.2		7.05	7.04		7.09	
29/1/18	21:37	Cloudy	Middle	3.0	14.30	14.30	14.30	8.32	8.32	8.32	32.34	32.34	32.34	85.1	85.2	84.7	7.14	7.16	7.11	2.10	2.08	2.01	7	5.50
	21:38		Middle	3.0	14.30	14.30		8.32	8.32	8.32	32.34	32.34		32.34	84.2		84.1	84.7		7.07	7.06		7.11	
1/2/18	14:30	Fine	Middle	3.0	15.50	15.50	15.50	8.34	8.34	8.34	31.89	31.89	31.91	86.6	80.8	85.5	7.11	7.13	7.11	3.41	3.43	3.35	6	5.00
	14:32		Middle	3.0	15.50	15.50		8.34	8.34	8.34	31.93	31.93		31.91	88.6		86.1	85.5		7.11	7.08		7.11	
3/2/18	14:30	Fine	Middle	3.0	15.00	15.00	15.00	8.72	8.72	8.48	32.83	32.83	32.84	84.4	85.1	84.7	6.95	7.00	6.95	3.03	3.09	3.13	3	2.50
	14:32		Middle	3.0	15.00	15.00		8.23	8.23	8.48	32.81	32.89		32.84	84.9		84.3	84.7		6.99	6.85		6.95	
5/2/18	17:45	Fine	Middle	3.0	14.70	14.70	14.65	8.32	8.32	8.32	32.01	32.01	32.02	87.0	87.0	87.1	7.26	7.27	7.27	2.07	2.10	2.09	5	6.00
	17:47		Middle	3.0	14.60	14.60		8.32	8.32	8.32	32.02	32.02		32.02	87.1		87.1	87.1		7.27	7.27		7.27	
7/2/18	16:05	Cloudy	Middle	3.0	14.90	14.90	14.90	8.32	8.32	8.32	31.98	31.98	31.98	87.2	87.6	87.6	7.26	7.28	7.28	2.36	2.42	2.41	4	4.50
	16:07		Middle	3.0	14.90	14.90		8.32	8.32	8.32	31.98	31.98		31.98	87.8		87.6	87.6		7.29	7.28		7.28	
9/2/18	19:59	Cloudy	Middle	3.0	15.60	15.60	15.60	8.29	8.29	8.29	32.65	32.65	32.65	83.0	83.9	85.1	6.77	6.84	6.92	1.30	1.24	1.22	5	5.50
	20:00		Middle	3.0	15.60	15.60		8.29	8.29	8.29	32.65	32.65		32.65	86.2		87.1	85.1		7.03	7.02		6.92	
12/2/18	22:47	Cloudy	Middle	3.0	15.70	15.70	15.70	8.30	8.30	8.30	32.65	32.65	32.65	84.7	85.6	85.0	6.90	6.98	6.93	1.41	1.45	1.42	3	3.50
	22:48		Middle	3.0	15.70	15.70		8.30	8.30	8.30	32.65	32.65		32.65	85.7		84.0	85.0		6.99	6.86		6.93	
15/2/18	22:11	Cloudy	Middle	3.0	16.60	16.60	16.60	8.28	8.28	8.28	32.61	32.61	32.61	83.1	83.7	83.6	6.65	6.70	6.69	1.44	1.51	1.52	6	7.00
	22:12		Middle	3.0	16.60	16.60		8.28	8.28	8.28	32.61	32.61		32.61	83.9		83.5	83.6		6.71	6.68		6.69	
20/2/18	14:45	Cloudy	Middle	2.5	18.20	18.20	18.30	8.19	8.19	8.19	31.77	31.77	31.77	87.3	87.7	87.6	6.80	6.83	6.81	1.92	1.82	1.84	4	3.50
	14:47		Middle	2.5	18.40	18.40		8.19	8.19	8.19	31.76	31.76		31.77	87.8		87.4	87.6		6.82	6.79		6.81	
22/2/18	15:50	Cloudy	Middle	3.0	16.40	16.40	16.40	8.23	8.23	8.23	31.89	31.89	31.90	83.2	83.9	83.5	6.71	6.72	6.72	2.12	2.11	2.12	4	4.00
	15:52		Middle	3.0	16.40	16.40		8.22	8.22	8.23	31.90	31.90		31.90	83.4		83.4	83.5		6.73	6.73		6.72	
24/2/18	19:24	Cloudy	Middle	3.0	17.10	17.10	17.10	8.12	8.12	8.12	32.39	32.39	32.39	86.9	87.0	86.9	6.88	6.88	6.88	1.67	1.54	1.56	<2	4.00
	19:25		Middle	3.0	17.10	17.10		8.12	8.12	8.12	32.39	32.39		32.39	86.7		87.0	86.9		6.86	6.88		6.88	
26/2/18	19:37	Cloudy	Middle	3.0	16.90	16.90	16.90	8.15	8.15	8.15	32.36	32.36	32.36	81.8	81.6	82.3	6.51	6.50	6.55	1.54	1.58	1.59	3	4.00
	19:38		Middle	3.0	16.90	16.90		8.15	8.15	8.15	32.36	32.36		32.36	83.2		82.5	82.3		6.62	6.57		6.55	

Remarks:  
Single underline denotes exceedance over Action Level.  
Double underline denotes exceedance over Limit Level.



**Water Monitoring Result at RW21-P789 - GEC / CRB / SHK  
Mid-Ebb Tide**

Date	Time	Weather Condition	Sampling Depth		Water Temperature			pH			Salinity		DO Saturation		DO		Turbidity		Suspended Solids					
					°C			-			ppt		%		mg/L		NTU		mg/L					
					Value	Average		Value	Average		Value	Average	Value	Average	Value	Average	Value	Average	Value	Average	Value	Average		
27/1/18	-	Cloudy	Middle	-	-	-	#DIV/0!	-	-	#DIV/0!	-	-	#DIV/0!	-	-	#DIV/0!	-	-	#DIV/0!	-	#DIV/0!			
	-		Middle	-	-	-	#DIV/0!	-	-	#DIV/0!	-	-	#DIV/0!	-	-	#DIV/0!	-	-	#DIV/0!	-	#DIV/0!			
29/1/18	22:00	Cloudy	Middle	4.0	15.10	15.10	15.10	8.29	8.29	8.29	32.21	32.21	32.21	84.1	84.2	84.2	6.96	6.97	6.97	1.09	1.13	1.13	4	6.00
	22:01		Middle	4.0	15.10	15.10	15.10	8.29	8.29	8.29	32.21	32.21	32.21	84.1	84.5	84.2	6.96	6.99	6.97	1.17	1.12	1.13	8	6.00
1/2/18	14:45	Fine	Middle	3.5	15.80	15.80	15.75	8.33	8.33	8.34	31.94	31.94	31.95	88.4	88.3	88.4	7.22	7.21	7.22	3.59	3.66	3.64	6	5.50
	14:47		Middle	3.5	15.70	15.70	15.75	8.34	8.34	8.34	31.95	31.95	31.95	88.5	88.5	88.4	7.23	7.23	7.22	3.66	3.64	3.64	5	5.50
3/2/18	14:04	Fine	Middle	3.0	15.30	15.30	15.25	8.21	8.21	8.22	32.83	32.88	32.88	83.6	82.7	82.2	6.86	6.78	6.80	3.76	3.22	3.74	3	3.00
	14:46		Middle	3.0	15.20	15.20	15.25	8.22	8.22	8.22	32.90	32.90	32.88	81.7	80.8	82.2	6.71	6.83	6.80	3.99	3.99	3.74	3	3.00
5/2/18	14:50	Fine	Middle	3.5	15.30	15.30	15.35	8.29	8.29	8.30	31.97	31.97	31.96	88.7	88.3	88.3	7.30	7.26	7.26	2.91	2.90	2.89	5	5.50
	14:52		Middle	3.5	15.40	15.40	15.35	8.30	8.30	8.30	31.94	31.94	31.96	88.0	88.0	88.3	7.24	7.24	7.26	2.89	2.86	2.89	6	5.50
7/2/18	16:30	Cloudy	Middle	3.5	15.20	15.20	15.20	8.33	8.33	8.34	32.00	32.00	32.01	91.7	91.6	91.6	7.57	7.57	7.57	3.41	3.32	3.38	6	7.00
	16:32		Middle	3.5	15.20	15.20	15.20	8.34	8.34	8.34	32.01	32.01	32.01	91.6	91.6	91.6	7.57	7.56	7.57	3.39	3.39	3.38	8	7.00
9/2/18	18:00	Cloudy	Middle	4.0	16.20	16.20	16.20	8.26	8.26	8.26	32.65	32.65	32.65	87.4	87.2	87.0	7.04	7.03	7.01	1.34	1.39	1.32	3	4.00
	18:01		Middle	4.0	16.20	16.20	16.20	8.26	8.26	8.26	32.65	32.65	32.65	87.5	86.4	87.0	7.02	6.96	7.01	1.25	1.29	1.32	5	4.00
12/2/18	23:03	Cloudy	Middle	4.0	15.60	15.60	15.60	8.22	8.22	8.22	32.18	32.18	32.18	86.5	86.3	87.2	7.07	7.05	7.13	1.34	1.21	1.29	4	3.00
	23:04		Middle	4.0	15.60	15.60	15.60	8.22	8.22	8.22	32.18	32.18	32.18	88.7	87.3	87.2	7.25	7.14	7.13	1.37	1.25	1.29	2	3.00
15/2/18	22:30	Cloudy	Middle	4.0	16.50	16.50	16.50	8.25	8.25	8.25	32.53	32.53	32.53	87.1	88.1	87.1	6.98	7.05	6.98	1.56	1.67	1.69	2	3.50
	22:31		Middle	4.0	16.50	16.50	16.50	8.25	8.25	8.25	32.53	32.53	32.53	87.2	85.9	87.1	6.99	6.88	6.98	1.73	1.79	1.69	5	3.50
20/2/18	15:05	Cloudy	Middle	3.5	18.00	18.00	18.15	8.19	8.19	8.19	31.81	31.81	31.79	86.6	87.4	87.1	6.76	6.82	6.79	1.05	1.05	1.05	3	2.50
	15:07		Middle	3.5	18.30	18.30	18.15	8.19	8.19	8.19	31.76	31.76	31.79	87.3	87.0	87.1	6.80	6.78	6.79	1.05	1.06	1.05	2	2.50
22/2/18	16:10	Cloudy	Middle	4.0	16.50	16.50	16.50	8.22	8.22	8.22	31.89	31.89	31.90	85.9	86.2	86.1	6.92	6.94	6.94	1.91	1.90	1.90	6	5.00
	16:12		Middle	4.0	16.50	16.50	16.50	8.22	8.22	8.22	31.90	31.90	31.90	86.3	86.0	86.1	6.95	6.93	6.94	1.90	1.90	1.90	4	5.00
24/2/18	18:30	Cloudy	Middle	4.0	17.50	17.50	17.50	8.09	8.09	8.09	32.36	32.36	32.36	80.3	80.1	80.4	6.31	6.29	6.32	1.93	1.86	1.86	<2	4.00
	18:31		Middle	4.0	17.50	17.50	17.50	8.09	8.09	8.09	32.36	32.36	32.36	80.8	80.2	80.4	6.35	6.32	6.32	1.87	1.77	1.86	4	4.00
26/2/18	19:50	Cloudy	Middle	4.0	17.00	17.00	17.00	8.14	8.14	8.14	32.39	32.39	32.39	82.2	82.8	82.5	6.53	6.57	6.55	1.77	1.74	1.74	<2	3.00
	19:51		Middle	4.0	17.00	17.00	17.00	8.14	8.14	8.14	32.39	32.39	32.39	82.6	82.3	82.5	6.55	6.54	6.55	1.76	1.70	1.74	3	3.00

Remarks:  
Single underline denotes exceedance over Action Level.  
Double underline denotes exceedance over Limit Level.



**Water Monitoring Result at WSD19 - Sheung Wan  
Mid-Ebb Tide**

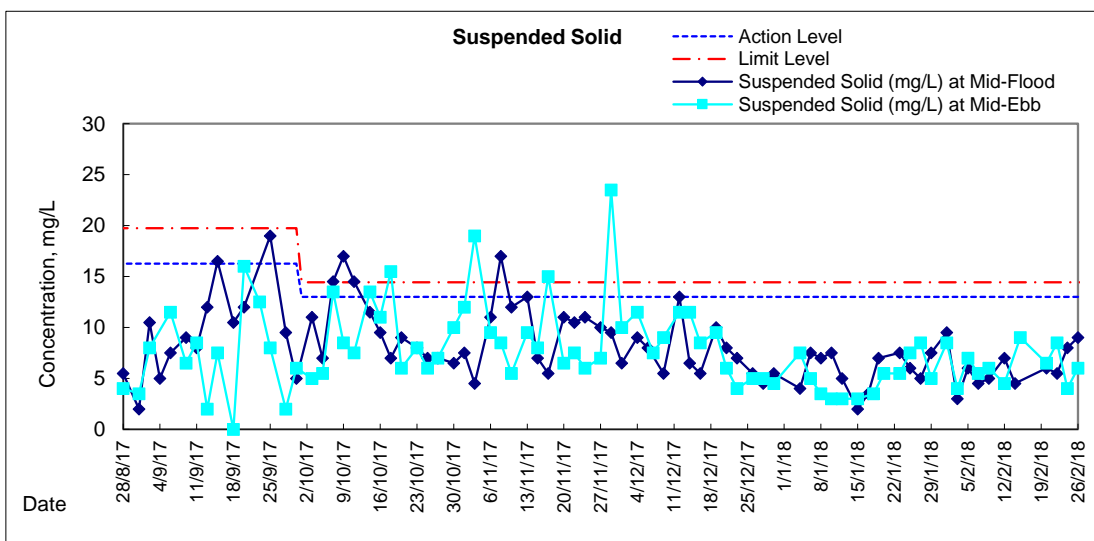
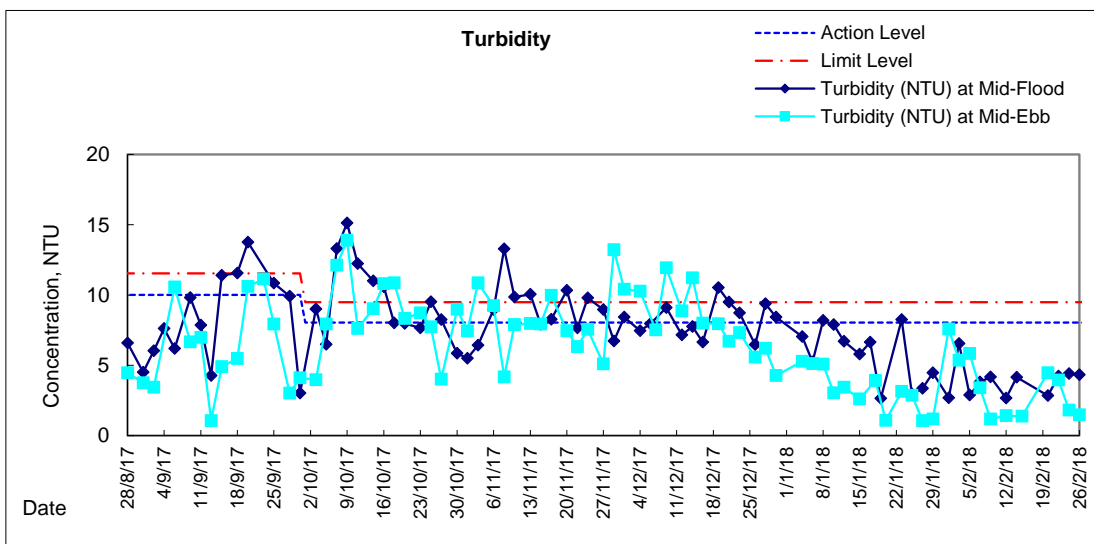
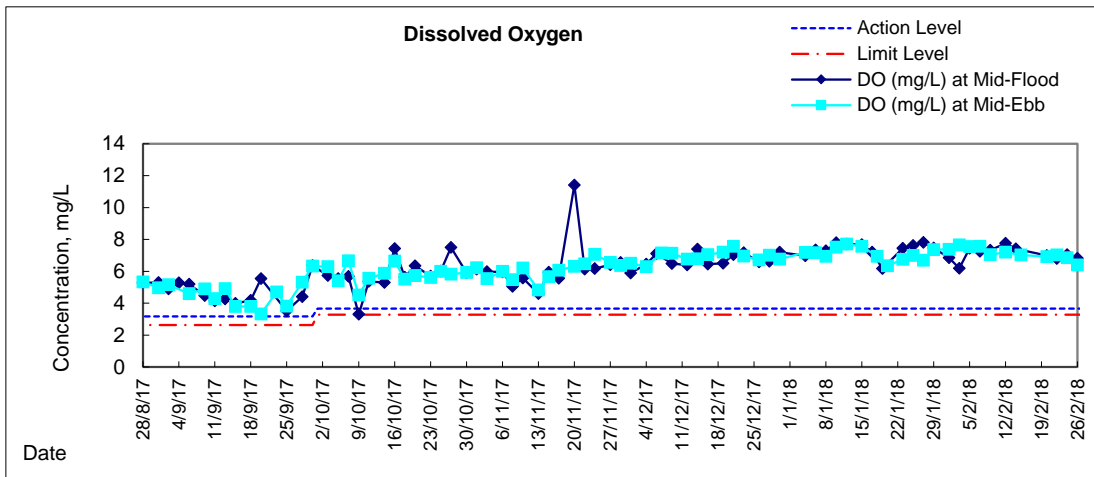
Date	Time	Weather Condition	Sampling Depth		Water Temperature		pH			Salinity		DO Saturation		DO		Turbidity		Suspended Solids						
					°C		-			ppt		%		mg/L		NTU		mg/L						
					Value	Average	Value	Average	Value	Average	Value	Average	Value	Average	Value	Average	Value	Average	Value	Average				
27/1/18	19:00	Cloudy	Middle	4.0	16.90	16.90	16.90	8.29	8.29	8.29	32.34	32.34	32.34	83.2	82.9	84.0	6.63	6.60	6.69	1.08	1.10	1.07	7	8.50
	19:01		Middle	4.0	16.90	16.90		8.29	8.29	8.29	32.34	32.34		85.2	84.8		6.78	6.75		1.05	1.04		10	
29/1/18	20:30	Cloudy	Middle	4.0	14.00	14.00	14.00	8.31	8.31	8.31	32.38	32.38	32.38	87.4	87.5	87.2	7.36	7.37	7.35	1.11	1.23	1.17	4	5.00
	20:31		Middle	4.0	14.00	14.00		8.31	8.31	8.31	32.38	32.38		87.7	86.3		7.39	7.27		1.15	1.19		6	
1/2/18	13:15	Fine	Middle	4.0	15.80	15.80	15.75	8.26	8.26	8.28	31.89	31.89	31.90	90.0	90.4	90.3	7.35	7.38	7.38	7.55	7.55	7.58	8	8.50
	13:17		Middle	4.0	15.70	15.70		8.29	8.29	8.28	31.90	31.90		90.4	90.5		7.39	7.40		7.59	7.62		9	
3/2/18	13:03	Fine	Middle	3.0	15.60	15.60	15.55	7.99	7.99	8.02	32.82	32.82	32.82	92.1	93.9	93.5	7.56	7.66	7.65	5.42	5.34	5.36	4	4.00
	13:05		Middle	3.0	15.50	15.50		8.01	8.09	8.02	32.81	32.81		94.9	93.1		7.75	7.61		5.34	5.34		4	
5/2/18	16:35	Fine	Middle	4.0	15.10	15.10	15.10	8.26	8.26	8.27	31.96	31.96	31.96	91.2	91.0	91.1	7.55	7.54	7.55	5.84	5.84	5.83	7	7.00
	16:37		Middle	4.0	15.10	15.10		8.27	8.27	8.27	31.96	31.96		91.1	91.1		7.55	7.55		5.82	5.83		7	
7/2/18	17:45	Cloudy	Middle	3.5	15.30	15.30	15.30	8.27	8.27	8.28	32.00	32.00	32.00	91.7	91.7	91.8	7.55	7.56	7.56	3.38	3.38	3.40	5	5.50
	17:47		Middle	3.5	15.30	15.30		8.28	8.28	8.28	32.00	32.00		91.9	91.7		7.57	7.56		3.40	3.44		6	
9/2/18	18:30	Cloudy	Middle	4.0	15.90	15.90	15.90	8.19	8.19	8.19	32.37	32.37	32.37	86.0	87.7	87.2	6.95	7.09	7.05	1.13	1.21	1.17	6	6.00
	18:31		Middle	4.0	15.90	15.90		8.19	8.19	8.19	32.37	32.37		87.8	87.3		7.10	7.05		1.16	1.18		6	
12/2/18	21:45	Cloudy	Middle	4.0	15.20	15.20	15.20	8.25	8.25	8.25	32.61	32.61	32.61	87.3	88.0	87.4	7.19	7.25	7.20	1.36	1.39	1.42	5	4.50
	21:46		Middle	4.0	15.20	15.20		8.25	8.25	8.25	32.61	32.61		87.2	87.1		7.19	7.17		1.43	1.50		4	
15/2/18	21:00	Cloudy	Middle	4.0	16.30	16.30	16.30	8.17	8.17	8.18	32.03	32.03	32.03	84.8	87.3	87.0	6.85	7.04	7.02	1.23	1.39	1.39	9	9.00
	21:01		Middle	4.0	16.30	16.30		8.18	8.18	8.18	32.03	32.03		88.1	87.7		7.10	7.08		1.42	1.50		9	
20/2/18	13:25	Cloudy	Middle	3.5	18.70	18.70	18.95	8.15	8.15	8.15	31.75	31.75	31.75	89.9	90.5	90.2	6.90	6.94	6.91	4.50	4.43	4.46	7	6.50
	13:27		Middle	3.5	19.20	19.20		8.15	8.15	8.15	31.74	31.74		90.3	89.9		6.92	6.89		4.47	4.44		6	
22/2/18	17:10	Cloudy	Middle	4.0	16.40	16.40	16.40	8.18	8.18	8.19	31.71	31.71	31.72	87.1	87.3	87.1	7.03	7.05	7.03	3.99	3.99	3.96	9	8.50
	17:12		Middle	4.0	16.40	16.40		8.19	8.19	8.19	31.72	31.72		87.1	87.0		7.03	7.02		3.95	3.90		8	
24/2/18	20:07	Cloudy	Middle	4.0	17.20	17.20	17.20	8.12	8.12	8.12	32.33	32.33	32.33	87.6	87.8	86.7	6.92	6.94	6.85	1.84	1.88	1.82	4	4.00
	20:08		Middle	4.0	17.20	17.20		8.12	8.12	8.12	32.33	32.33		85.3	85.9		6.74	6.79		1.77	1.79		4	
26/2/18	18:45	Cloudy	Middle	4.0	17.50	17.50	17.50	8.03	8.03	8.03	31.71	31.71	31.71	80.8	80.0	81.1	6.38	6.31	6.40	1.39	1.44	1.48	4	6.00
	18:46		Middle	4.0	17.50	17.50		8.03	8.03	8.03	31.71	31.71		82.7	80.8		6.52	6.37		1.52	1.57		8	

Remarks:  
Single underline denotes exceedance over Action Level.  
Double underline denotes exceedance over Limit Level.



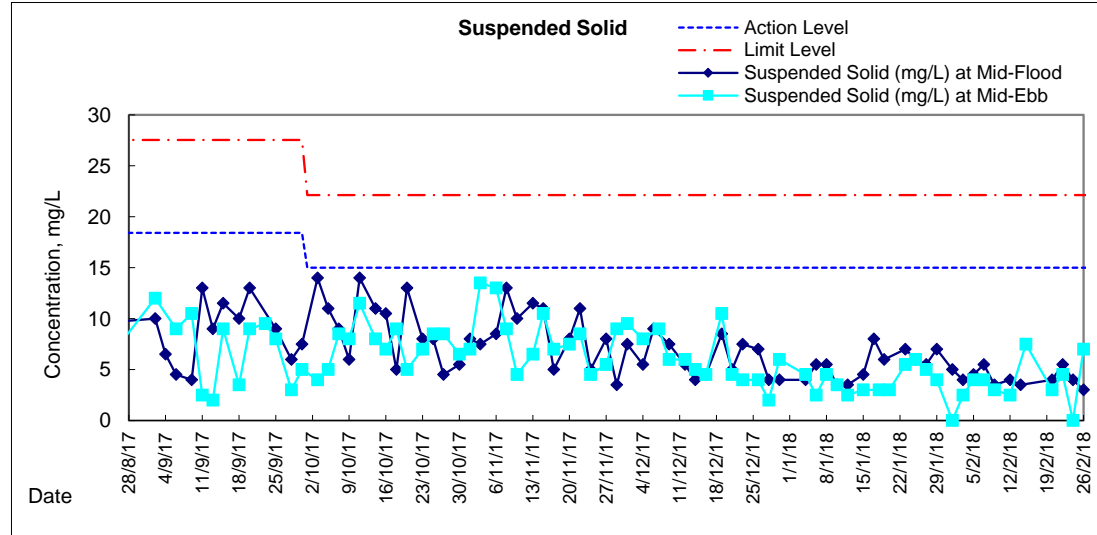
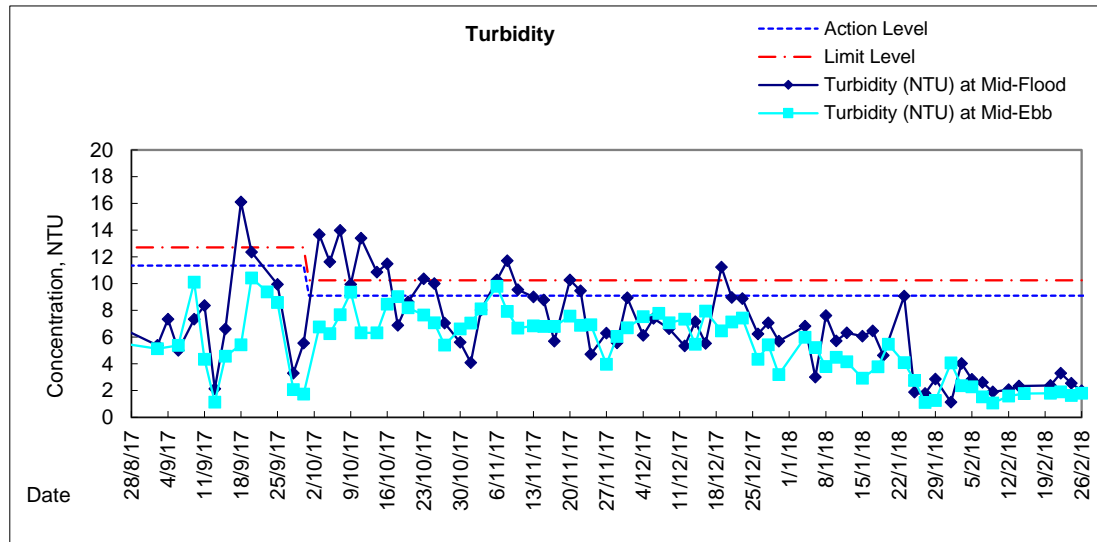
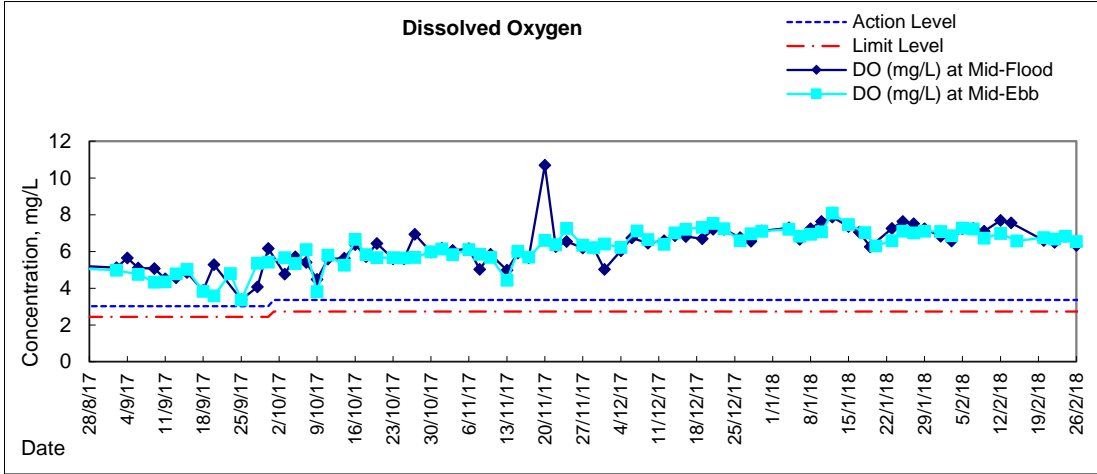


# Graphic Presentation of Water Quality Result of WSD19 - Sheung Wan



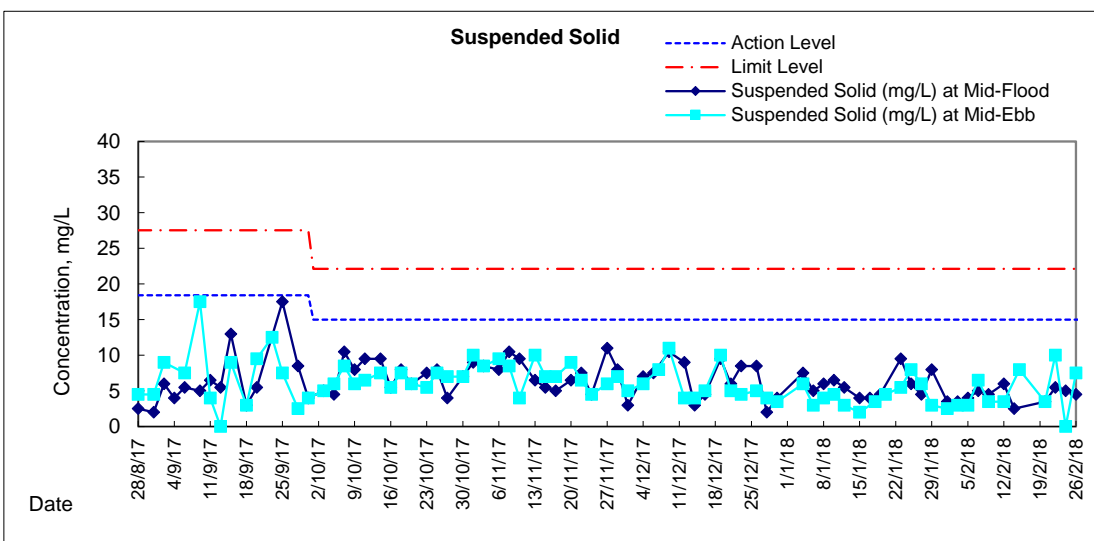
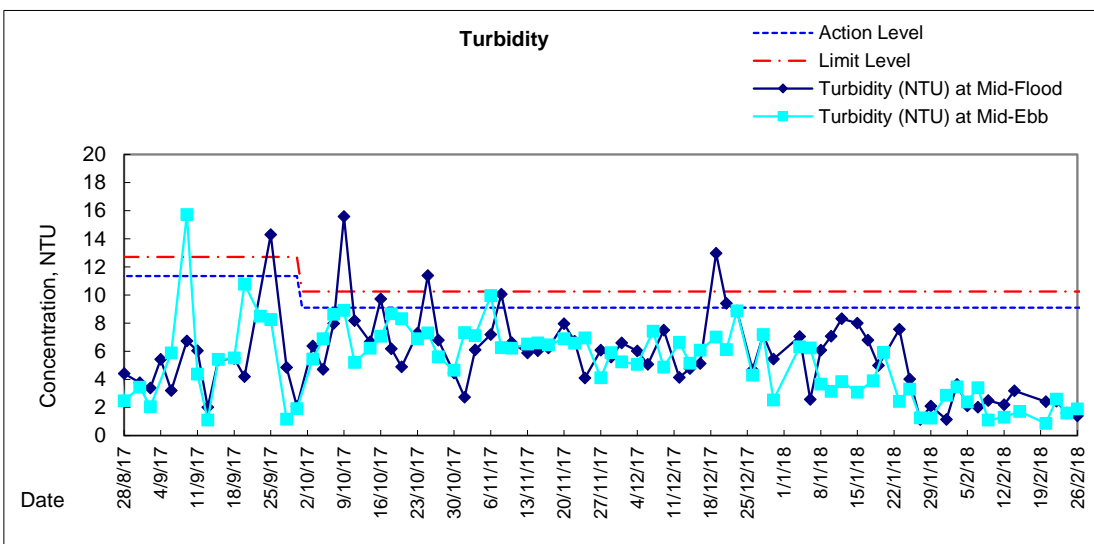
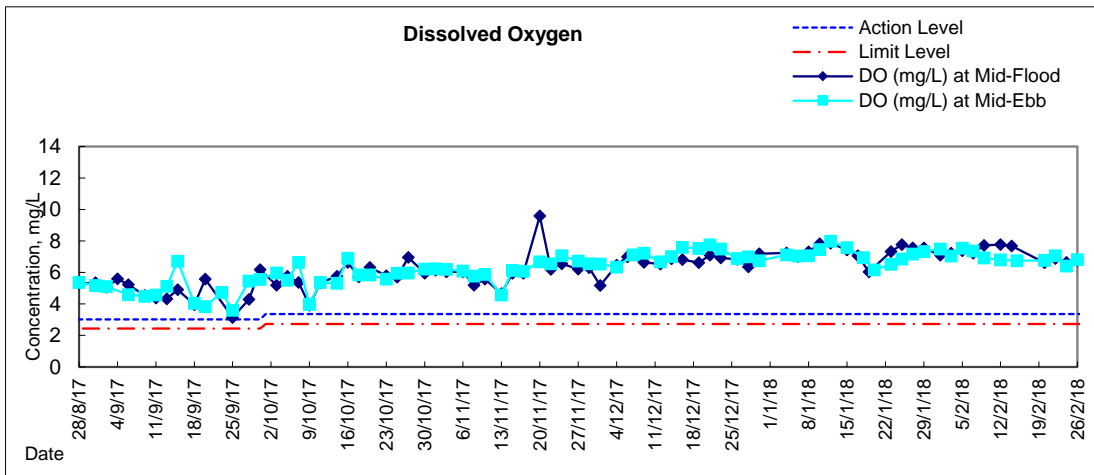


### Graphic Presentation of Water Quality Result of C1 - HKCEC



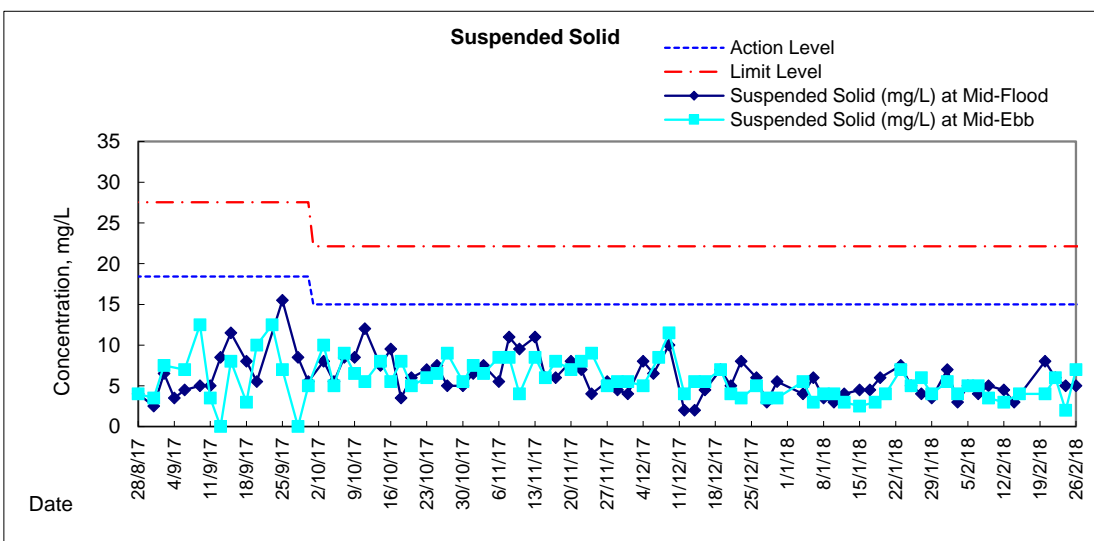
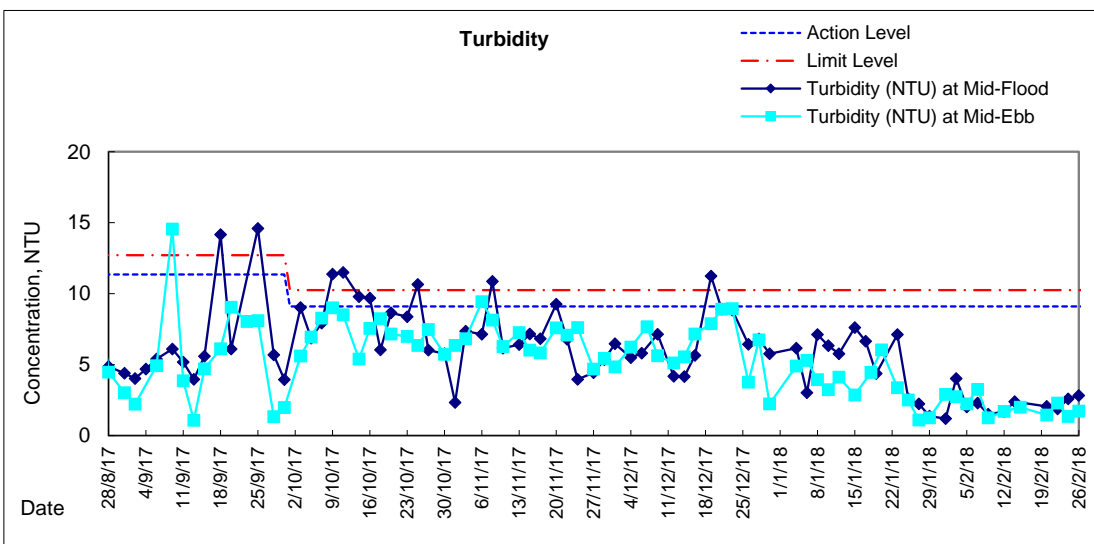
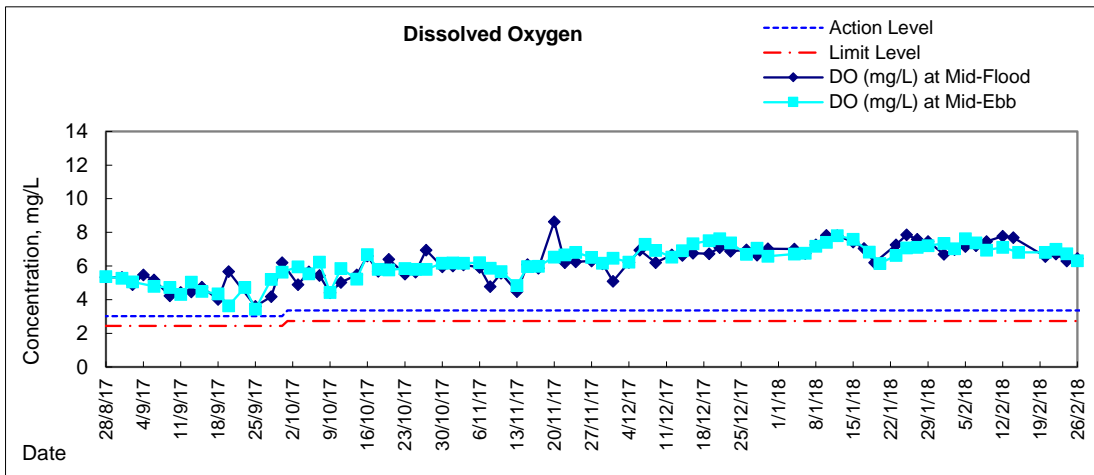


# Graphic Presentation of Water Quality Result of P1 - HKCEC Phase I



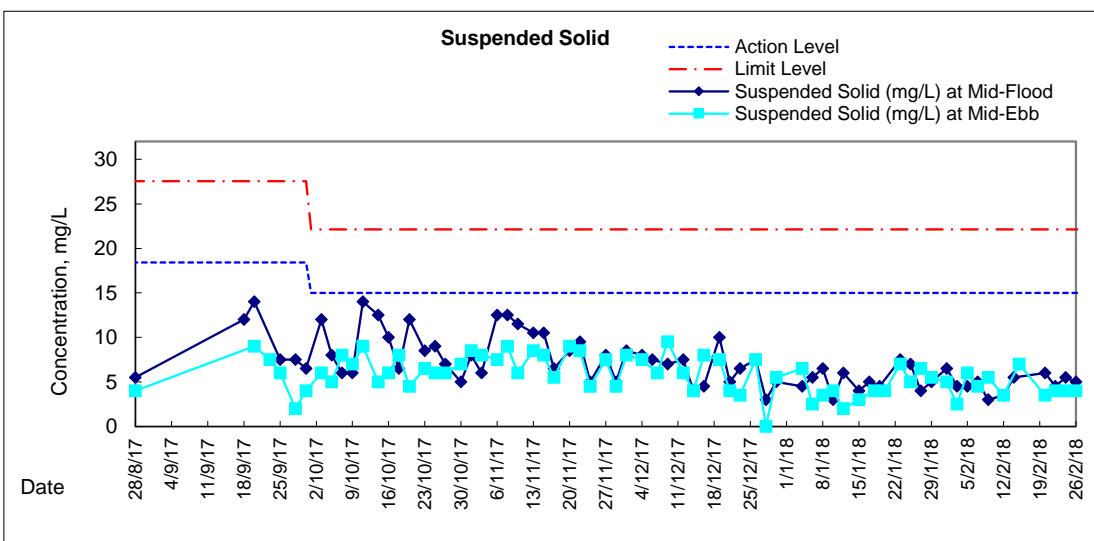
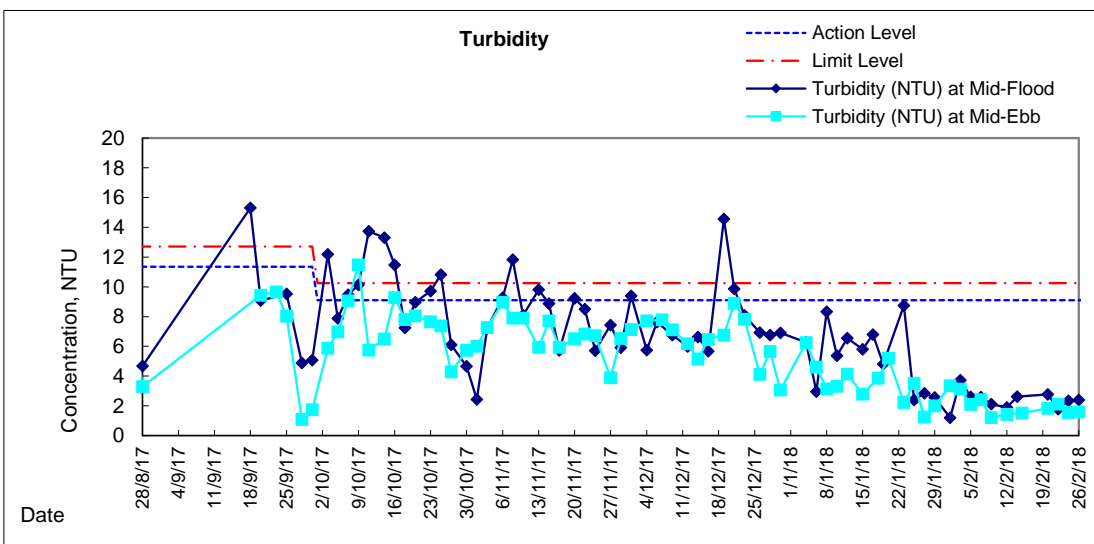
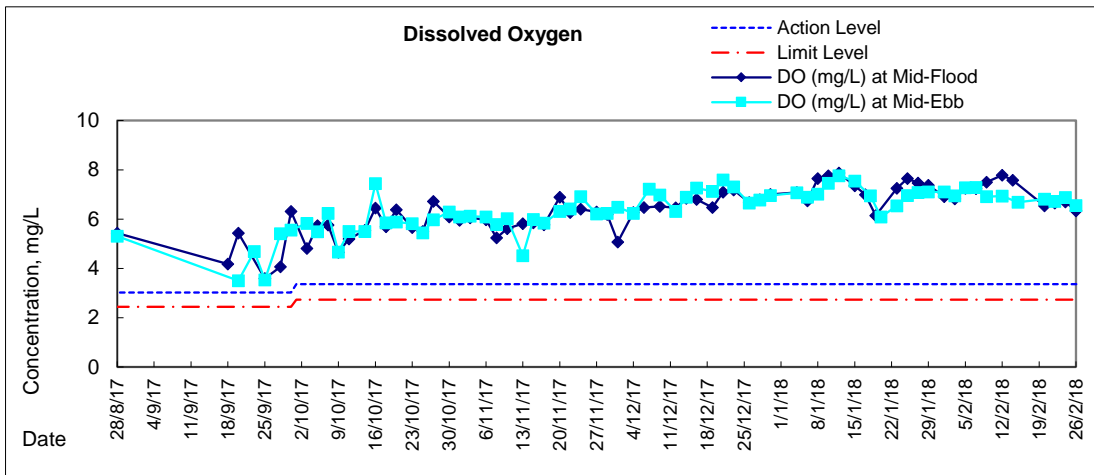


# Graphic Presentation of Water Quality Result of P3 - APA



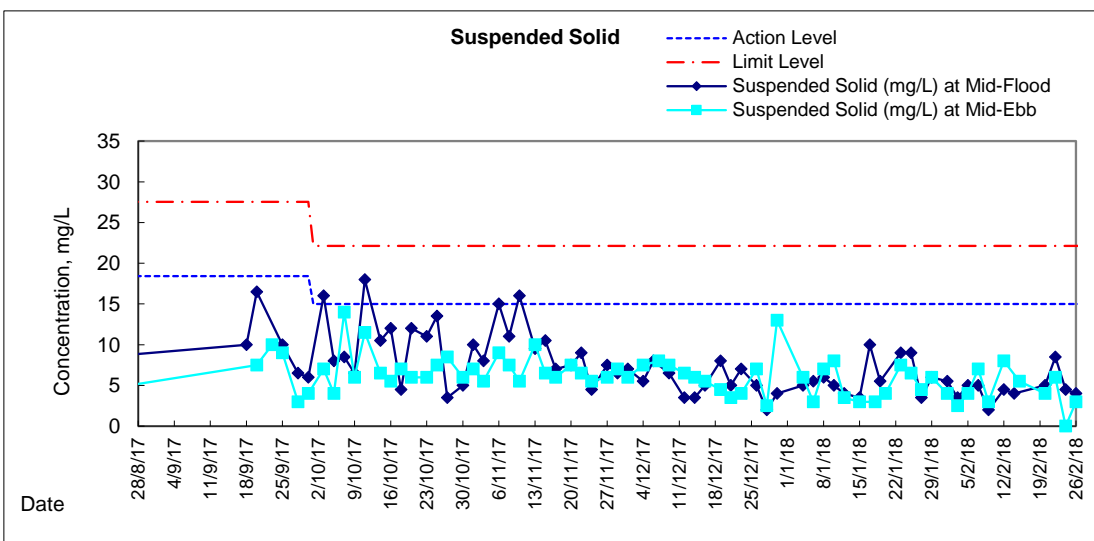
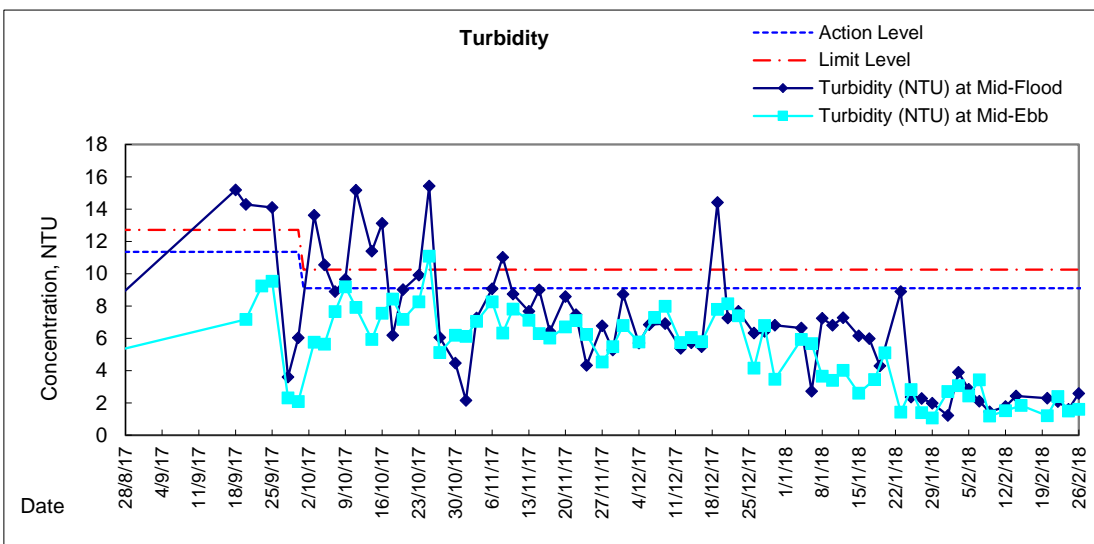
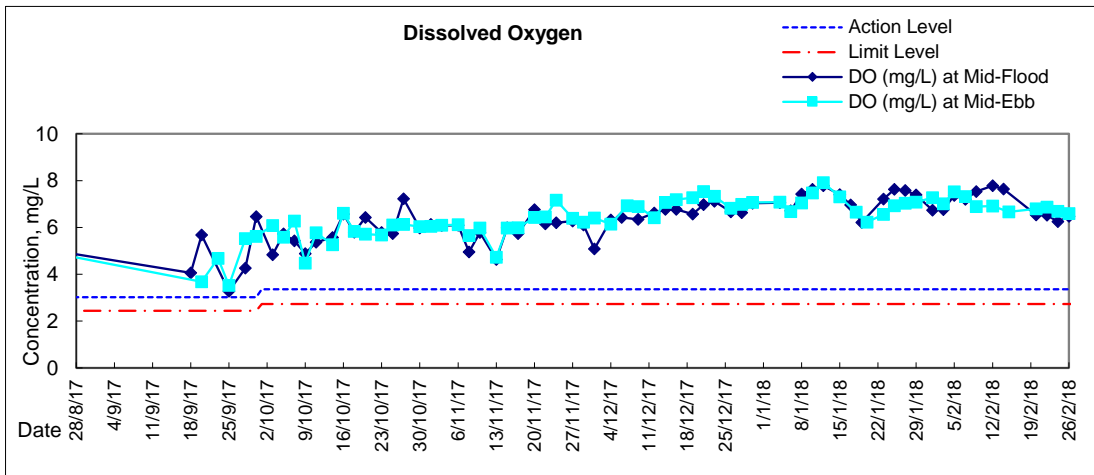


### Graphic Presentation of Water Quality Result of P5 - WCT / RT / IT



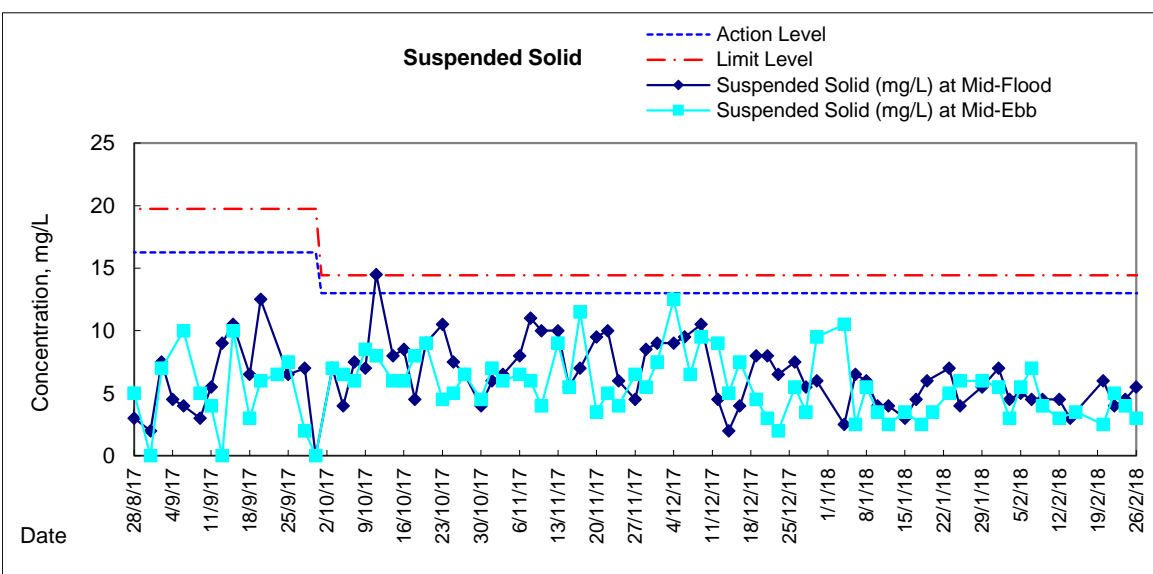
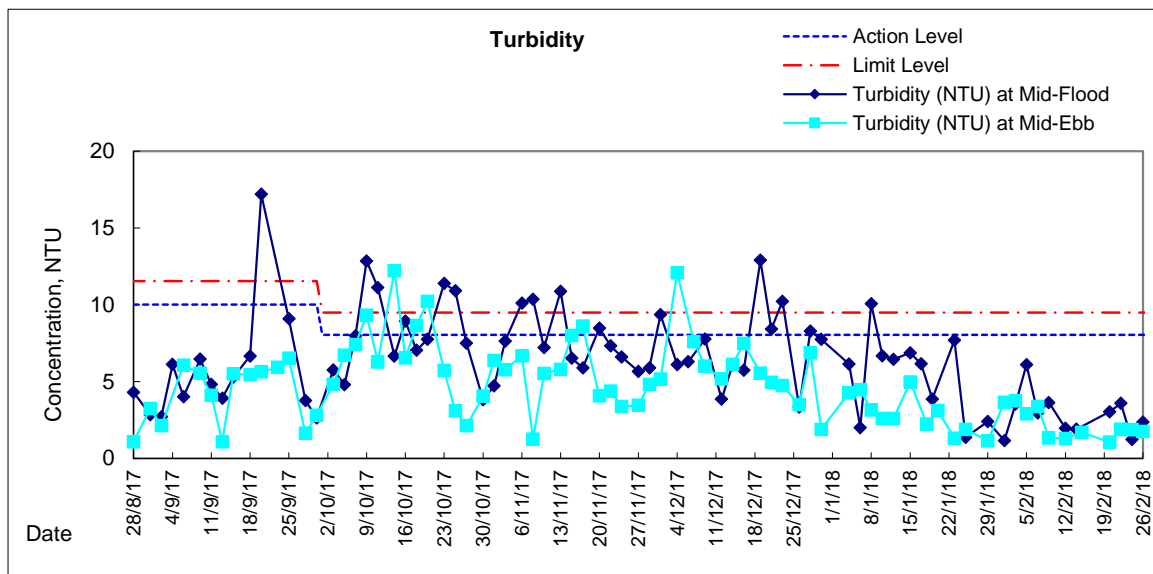
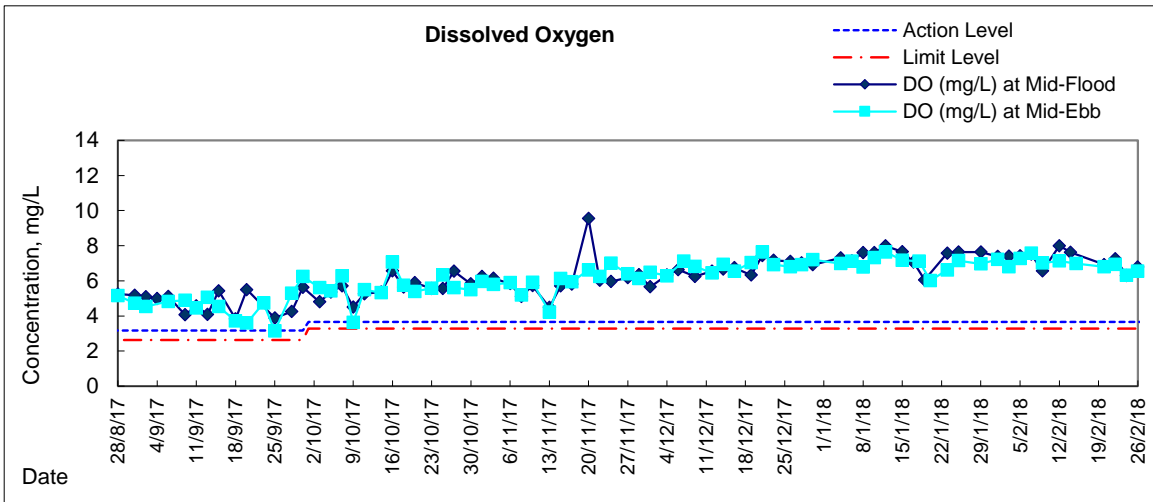


### Graphic Presentation of Water Quality Result of P4 - SOC



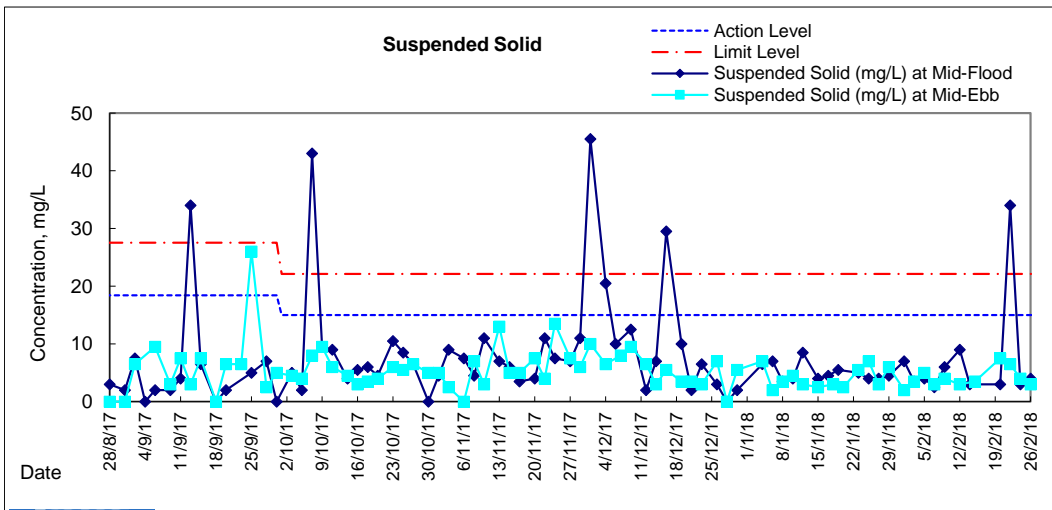
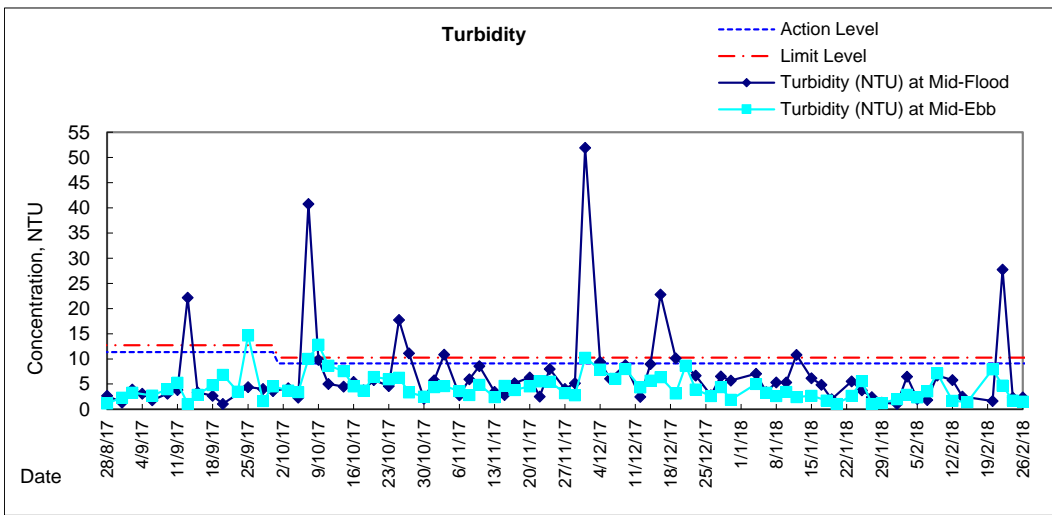
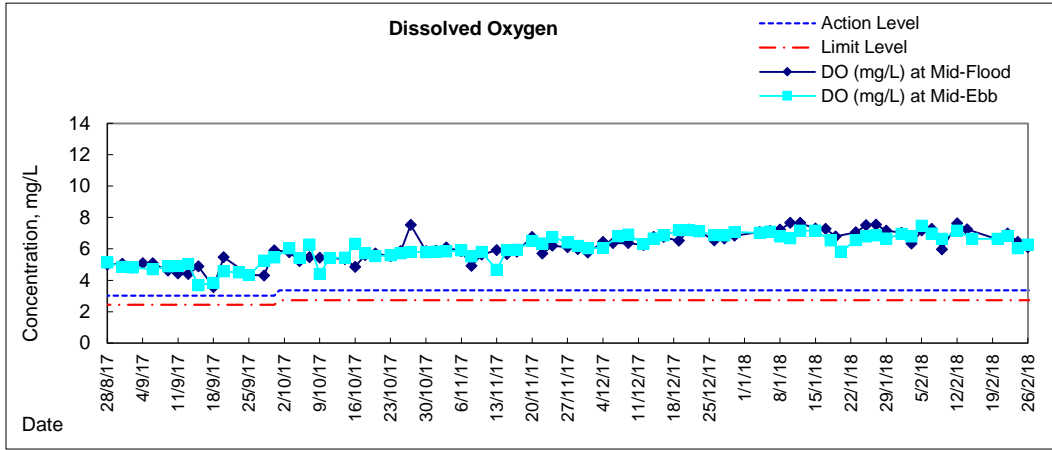


# Graphic Presentation of Water Quality Result of RW21-P789 - GEC/CRC/SHK





# Graphic Presentation of Water Quality Result of C7 - Windsor House







**Water Monitoring Result at C6 - Excelsior Hotel  
Mid-Flood Tide**

Date	Time	Weather Condition	Sampling Depth m		Water Temperature °C			pH			Salinity ppt			DO Saturation %			DO mg/L			
					Value	Average	Value	Average	Value	Average	Value	Average	Value	Average	Value	Average				
27/1/18	13:30	Cloudy	Surface	1.0	17.20	17.20	17.2	8.35	8.35	8.4	31.03	31.03	31.0	94.7	94.0	94.4	7.53	7.49	7.51	
	-		Middle	2.0	-	-	-	-	-	-	-	-	-	-	-	-	-	-	-	-
	13:32		Bottom	3.0	17.10	17.10	17.1	8.36	8.36	8.4	31.49	31.49	31.5	92.0	91.6	91.8	7.33	7.30	7.32	
29/1/18	15:43	Cloudy	Surface	1.0	15.80	15.80	15.8	8.35	8.35	8.4	31.13	31.13	31.1	89.6	89.6	89.6	7.38	7.38	7.38	
	-		Middle	2.0	-	-	-	-	-	-	-	-	-	-	-	-	-	-	-	
	15:45		Bottom	3.0	15.90	15.90	15.9	8.35	8.35	8.4	31.17	31.17	31.2	85.0	84.4	84.7	6.96	6.92	6.94	
1/2/18	-	Fine	Surface	-	-	-	-	-	-	-	-	-	-	-	-	-	-	-	-	
	19:02		Middle	1.0	15.00	15.00	15.0	8.23	8.23	8.2	31.42	31.42	31.4	84.8	84.3	84.6	7.48	7.43	7.46	
	-		Bottom	-	-	-	-	-	-	-	-	-	-	-	-	-	-	-	-	
3/2/18	-	Fine	Surface	-	-	-	-	-	-	-	-	-	-	-	-	-	-	-	-	
	10:09		Middle	1.5	15.10	15.10	15.1	8.09	8.09	8.1	31.78	31.78	31.8	76.6	76.2	76.4	6.36	6.32	6.34	
	-		Bottom	-	-	-	-	-	-	-	-	-	-	-	-	-	-	-	-	
5/2/18	-	Fine	Surface	-	-	-	-	-	-	-	-	-	-	-	-	-	-	-	-	
	10:10		Middle	1.5	14.30	14.30	14.3	8.23	8.23	8.2	31.14	31.14	31.1	83.7	83.7	83.7	7.08	7.09	7.09	
	-		Bottom	-	-	-	-	-	-	-	-	-	-	-	-	-	-	-	-	
7/2/18	11:45	Fine	Surface	1.0	14.90	14.90	14.9	8.30	8.30	8.3	31.36	31.36	31.4	84.4	84.4	84.4	7.04	7.04	7.04	
	-		Middle	2.0	-	-	-	-	-	-	-	-	-	-	-	-	-	-	-	
	11:47		Bottom	3.0	14.80	14.80	14.8	8.30	8.30	8.3	31.62	31.62	31.6	92.8	92.5	92.7	7.74	7.72	7.73	
9/2/18	11:30	Fine	Surface	1.0	16.70	16.70	16.7	7.77	7.77	7.8	32.35	32.35	32.4	86.8	88.3	87.6	6.93	7.05	6.99	
	-		Middle	2.0	-	-	-	-	-	-	-	-	-	-	-	-	-	-	-	
	11:32		Bottom	3.0	17.30	17.30	17.3	7.55	7.55	7.6	32.16	32.16	32.2	91.9	91.1	91.5	7.24	7.18	7.21	
12/2/18	15:12	Fine	Surface	1.0	16.40	16.40	16.4	8.38	8.38	8.4	31.19	31.19	31.2	93.6	93.4	93.5	7.58	7.56	7.57	
	-		Middle	2.0	-	-	-	-	-	-	-	-	-	-	-	-	-	-	-	
	15:10		Bottom	3.0	16.40	16.40	16.4	8.34	8.34	8.3	31.83	31.83	31.8	96.8	97.3	97.1	7.78	7.81	7.80	
14/2/18	16:10	Fine	Surface	1.0	16.20	16.20	16.2	8.28	8.28	8.3	31.58	31.58	31.6	92.0	91.4	91.7	7.47	7.40	7.44	
	-		Middle	2.0	-	-	-	-	-	-	-	-	-	-	-	-	-	-	-	
	16:12		Bottom	3.0	16.10	16.10	16.1	8.30	8.30	8.3	31.63	31.63	31.6	92.5	92.8	92.7	7.51	7.53	7.52	
20/2/18	10:05	Fine	Surface	1.0	17.80	17.80	17.8	8.17	8.17	8.2	31.49	31.49	31.5	86.8	87.4	87.1	6.81	6.85	6.83	
	-		Middle	2.0	-	-	-	-	-	-	-	-	-	-	-	-	-	-	-	
	10:07		Bottom	3.0	17.80	17.80	17.8	8.18	8.18	8.2	31.47	31.47	31.5	90.1	89.2	89.7	7.06	7.01	7.04	
22/2/18	-	Cloudy	Surface	-	-	-	-	-	-	-	-	-	-	-	-	-	-	-		
	11:35		Middle	1.5	16.70	16.70	16.7	8.19	8.19	8.2	31.45	31.45	31.5	86.6	86.4	86.5	6.96	6.95	6.96	
	-		Bottom	-	-	-	-	-	-	-	-	-	-	-	-	-	-	-		
24/2/18	9:25	Cloudy	Surface	1.0	16.70	16.70	16.7	8.19	8.19	8.2	31.48	31.48	31.5	79.4	79.6	79.5	6.38	6.39	6.39	
	-		Middle	2.0	-	-	-	-	-	-	-	-	-	-	-	-	-	-	-	
	9:27		Bottom	3.0	16.70	16.70	16.7	8.21	8.21	8.2	31.51	31.51	31.5	82.1	82.3	82.2	6.62	6.63	6.63	
26/2/18	14:48	Cloudy	Surface	1.0	17.40	17.40	17.4	8.08	8.08	8.1	31.33	31.33	31.3	73.2	73.2	73.2	5.81	5.80	5.81	
	-		Middle	2.0	-	-	-	-	-	-	-	-	-	-	-	-	-	-	-	
	14:50		Bottom	3.0	17.30	17.30	17.3	8.09	8.09	8.1	31.35	31.35	31.4	80.8	80.9	80.9	6.42	6.43	6.43	



**Water Monitoring Result at C7 - Windsor House  
Mid-Flood Tide**

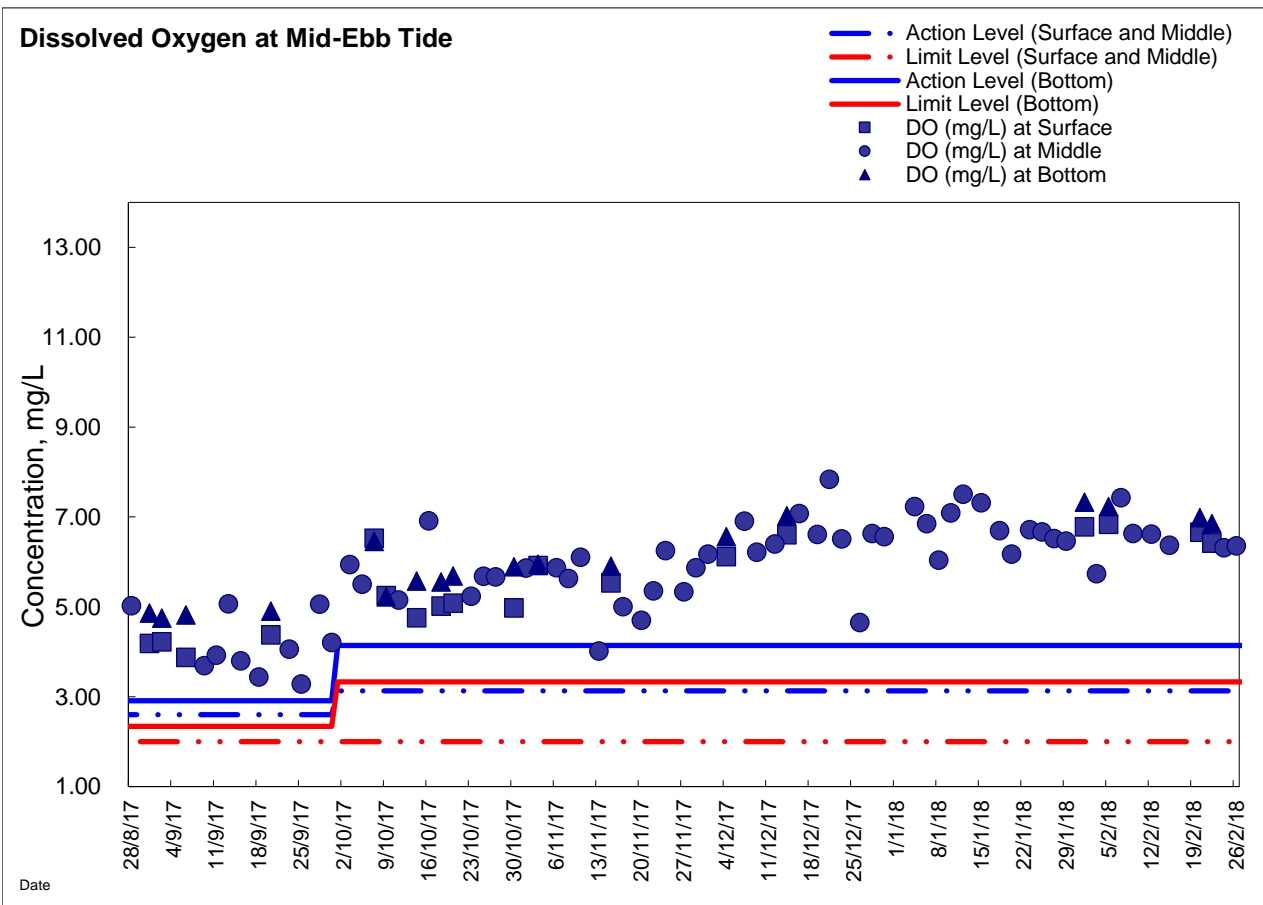
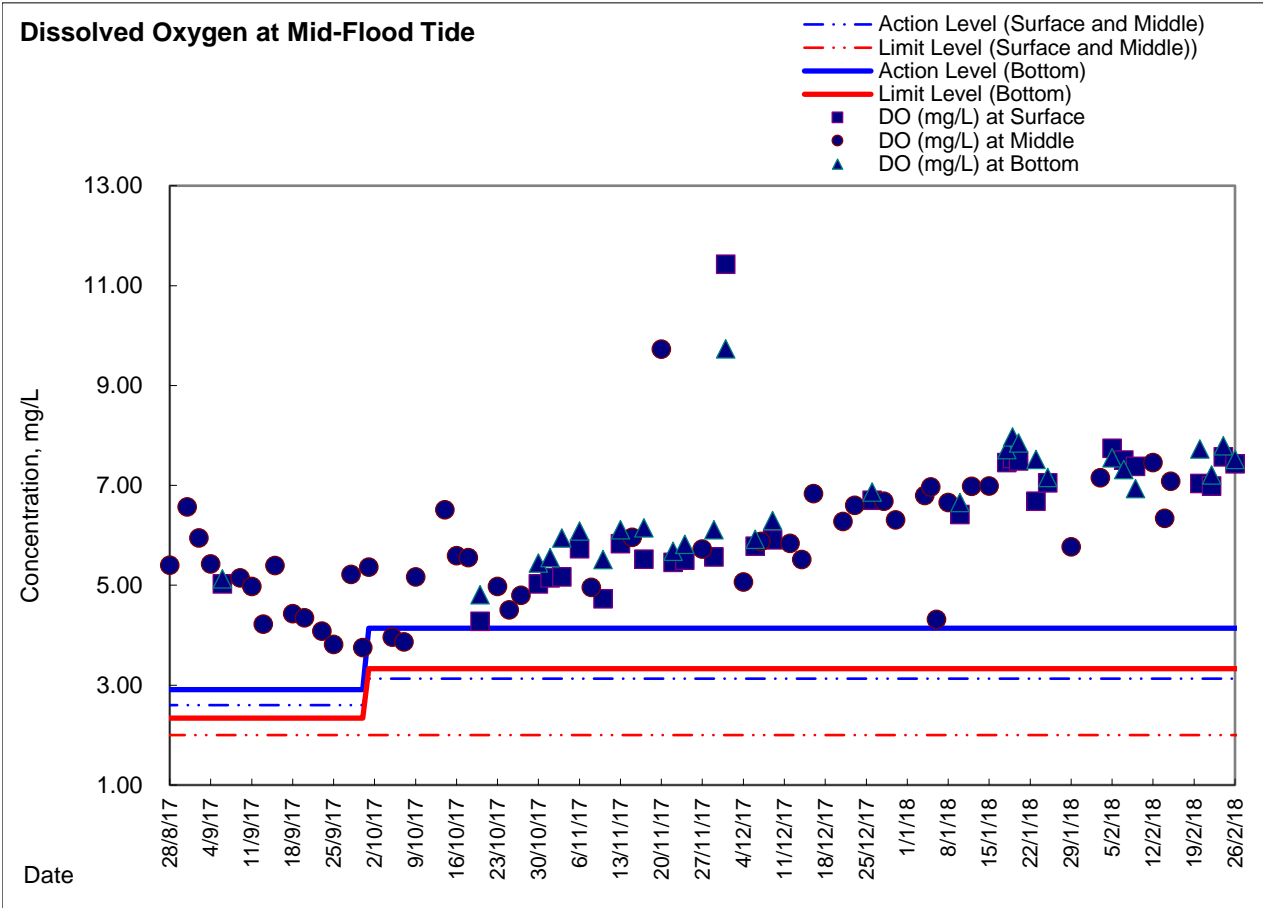
Date	Time	Weather Condition	Sampling Depth m	Water Temperature °C			pH			Salinity ppt			DO Saturation %			DO mg/L			
				Value	Average		Value	Average		Value	Average		Value	Average		Value	Average		
1/2/18	-	Fine	Surface	-	-	-	-	-	-	-	-	-	-	-	-	-	-	-	-
	18:50		Middle	1.5	15.30	15.30	15.3	8.23	8.23	8.2	32.08	32.08	32.1	81.6	81.9	81.8	7.15	7.18	7.17
	-		Bottom	-	-	-	-	-	-	-	-	-	-	-	-	-	-	-	-
3/2/18	-	Fine	Surface	-	-	-	-	-	-	-	-	-	-	-	-	-	-	-	-
	10:20		Middle	1.5	15.00	15.00	15.0	8.08	8.08	8.1	31.46	31.46	31.5	72.5	71.0	71.8	6.04	5.92	5.98
	-		Bottom	-	-	-	-	-	-	-	-	-	-	-	-	-	-	-	-
5/2/18	10:30	Fine	Surface	1.0	14.10	14.10	14.1	8.23	8.23	8.2	31.01	31.01	31.0	74.7	75.1	74.9	6.35	6.38	6.37
	-		Middle	2.0	-	-	-	-	-	-	-	-	-	-	-	-	-	-	-
	10:32		Bottom	3.0	13.90	13.90	13.9	8.23	8.23	8.2	31.43	31.43	31.4	84.1	84.5	84.3	7.16	7.19	7.18
7/2/18	12:15	Fine	Surface	1.0	14.90	14.90	14.9	8.27	8.27	8.3	31.61	31.61	31.6	83.6	83.5	83.6	6.96	6.95	6.96
	-		Middle	2.0	-	-	-	-	-	-	-	-	-	-	-	-	-	-	-
	12:17		Bottom	3.0	14.70	14.70	14.7	8.27	8.27	8.3	31.55	31.55	31.6	86.1	86.4	86.3	7.20	7.22	7.21
9/2/18	11:50	Fine	Surface	1.0	17.20	17.20	17.2	8.00	8.00	8.0	32.58	32.58	32.6	84.0	83.2	83.6	6.63	6.57	6.60
	-		Middle	2.0	-	-	-	-	-	-	-	-	-	-	-	-	-	-	-
	11:52		Bottom	3.0	17.30	17.30	17.3	7.90	7.90	7.9	32.85	32.85	32.9	82.0	87.6	84.8	6.45	6.41	6.43
12/2/18	15:55	Fine	Surface	1.0	16.40	16.40	16.4	8.38	8.38	8.4	31.16	31.16	31.2	92.2	92.3	92.3	7.44	7.45	7.45
	-		Middle	2.0	-	-	-	-	-	-	-	-	-	-	-	-	-	-	-
	15:57		Bottom	3.0	16.20	16.20	16.2	8.38	8.38	8.4	29.85	29.85	29.9	90.1	90.1	90.1	7.38	7.38	7.38
14/2/18	-	Fine	Surface	-	-	-	-	-	-	-	-	-	-	-	-	-	-	-	-
	16:15		Middle	1.5	16.20	16.20	16.2	8.30	8.30	8.3	31.15	31.15	31.2	86.4	87.0	86.7	7.02	7.07	7.05
	-		Bottom	-	-	-	-	-	-	-	-	-	-	-	-	-	-	-	-
20/2/18	10:15	Fine	Surface	1.0	17.90	17.90	17.9	8.16	8.16	8.2	31.47	31.47	31.5	77.3	77.4	77.4	6.06	6.06	6.06
	-		Middle	2.0	-	-	-	-	-	-	-	-	-	-	-	-	-	-	-
	10:17		Bottom	3.0	17.60	17.60	17.6	8.17	8.17	8.2	31.53	31.53	31.5	85.8	85.2	85.5	6.77	6.73	6.75
22/2/18	11:45	Cloudy	Surface	1.0	16.60	16.60	16.6	8.18	8.18	8.2	31.58	31.58	31.6	78.4	78.5	78.5	6.31	6.32	6.32
	-		Middle	2.0	-	-	-	-	-	-	-	-	-	-	-	-	-	-	-
	11:47		Bottom	3.0	16.50	16.50	16.5	8.17	8.17	8.2	31.40	31.40	31.4	85.1	85.4	85.3	6.87	6.89	6.88
24/2/18	9:20	Cloudy	Surface	1.0	16.70	16.70	16.7	8.17	8.17	8.2	30.47	30.47	30.5	69.3	69.5	69.4	5.59	5.61	5.60
	-		Middle	2.0	-	-	-	-	-	-	-	-	-	-	-	-	-	-	-
	9:22		Bottom	3.0	16.90	16.90	16.9	8.16	8.16	8.2	31.61	31.61	31.6	75.4	75.3	75.4	6.04	6.04	6.04
26/2/18	14:42	Cloudy	Surface	1.0	17.60	17.60	17.6	8.12	8.12	8.1	31.49	31.49	31.5	78.9	79.3	79.1	6.22	6.25	6.24
	-		Middle	2.0	-	-	-	-	-	-	-	-	-	-	-	-	-	-	-
	14:44		Bottom	3.0	17.50	17.50	17.5	8.11	8.11	8.1	31.58	31.59	31.6	86.3	86.4	86.4	6.83	6.83	6.83





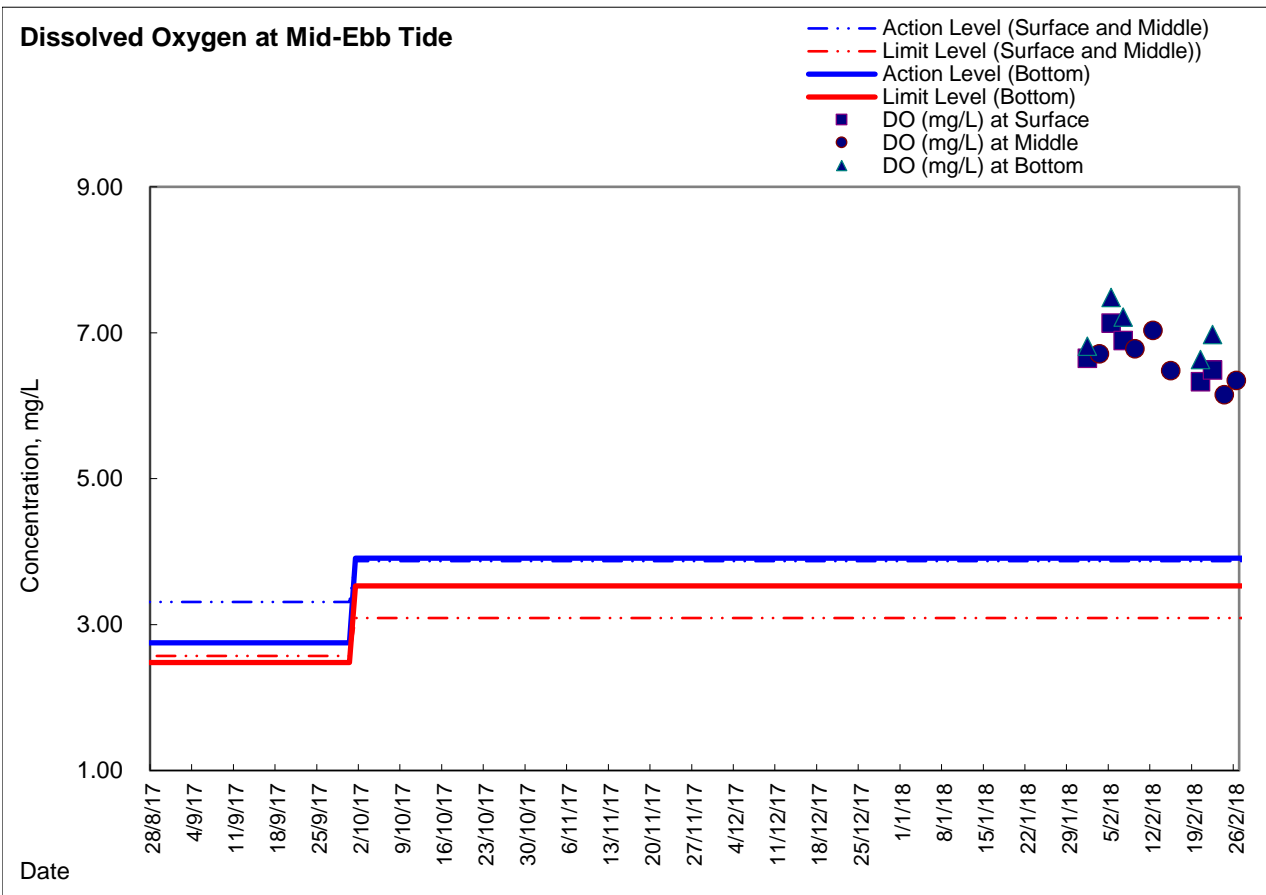
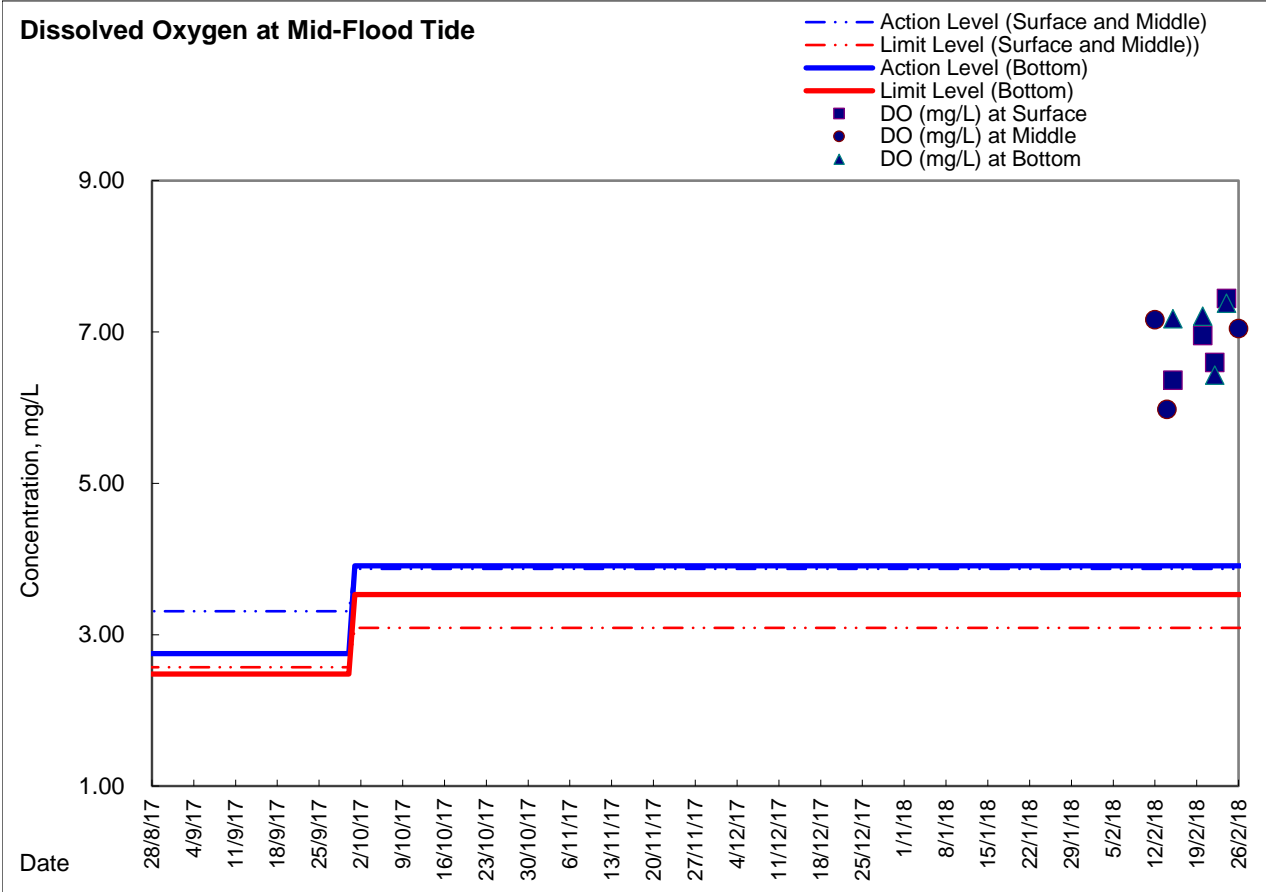


### Graphic Presentation of Enhanced Water Monitoring Results (DO) at C6 - Excelsior Hotel





### Graphic Presentation of Enhanced Water Monitoring Results (DO) at C7 - Windsor House



Remark: Enhanced DO monitoring at Windsor House Cooling (Station Ref: C7) was temporarily suspended since 22 October 2014 with respect to the formation of temporary reclamation zone TS3 and was resumed from 1 February 2018 onwards with respect to the completion of removal of temporary reclamation zone.